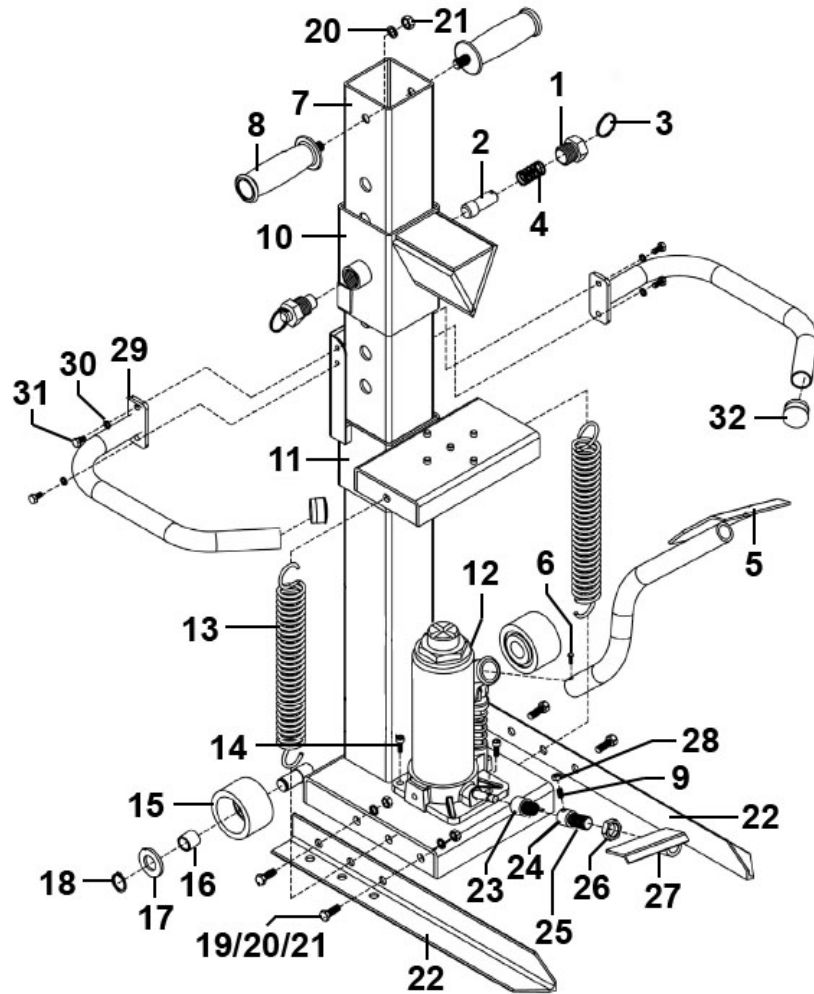


Parts Information:
**Hydraulic Log Splitter 8tonne 575mm
 Capacity Vertical Type
 Model No: LS575VH**



Item	Part No.	Description
1	LS575VH.01	Threaded Sleeve
2	LS575VH.02	Pin
3	LS575VH.03	C-Ring
4	LS575VH.04	Spring Dia 18mm
5	LS575VH.05	Foot Pedal
6	SS610.S	Hex Head Set Screw M6x10
7	LS575VH.07	Frame Beam
8	LS575VH.08	Handle
9	SS612.S	Hex Head Set Screw M6 X 12 Zinc
10	LS575VH.10	Wedge Assembly
11	LS575VH.11	Workbench
12	LS575VH.12	Hydraulic Pump
13	LS575VH.13	Spring Dia 35mm
14	SCB815.SB	Socket Cap Bolt M8 x 15mm Black
15	LS575VH.15	Wheel, Fixed Plastic (D:65 W:38 B:22)
16	LS575VH.16	Spacer

Item	Part No.	Description
17	LS575VH.17	Flat Washer M16
18	SM355B.40)	External Circlip 15.6mm ID.
19	SS1025.S	Hex Head Set Screw M10 X 25 Zinc
20	SWM10.S	Spring Washer M10 Zinc
21	SN10.S	Steel Nut M10 Zinc
22	LS575VH.22	Foot
23	LS575VH.23	Torsion Spring Sleeve
24	LS575VH.24	Torsion Spring Dia 18.2mm
25	LS575VH.25	Extension Rod
26	PT1150.V2B211	M16 x 1.5 Fine Pitch Half Nut
27	LS575VH.27	Release Lever
28	SN6.S	Steel Nut M6 Zinc
29	LS575VH.29	Log Cradle
30	LS575VH.30	Lock Washer 6mm
31	SS612.S	Hex Head Set Screw M6 X 12 Zinc
32	LS575VH.32	End Cover

NOTE: It is our policy to continually improve products and as such we reserve the right to alter data, specifications and component parts without prior notice. There may be alternative versions of this product, please contact us should you require this information.

IMPORTANT: No liability is accepted for incorrect use of product. Spare parts must be fitted by a competent person

WARRANTY: Guarantee is 12 months from purchase date, proof of which will be required for any claim.