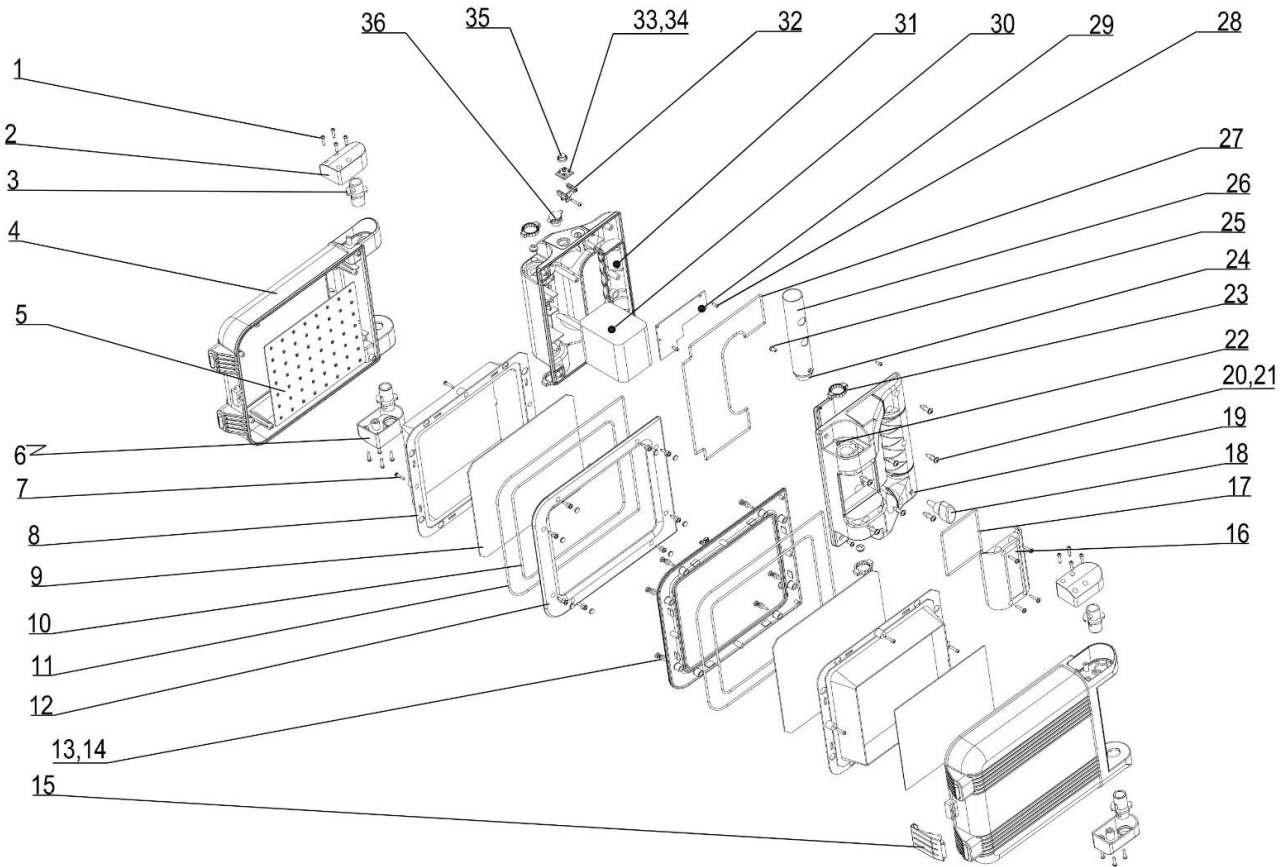




Parts Information:
Rechargeable Floodlight 30W SMD LED
Folding Case
Model No: LED191T



Item	Part No.	Description
1	LED191T.01	CROSS TAPPING SCREW ST2.9x15mm
2	LED191T.02	ROTATING SHAFT, LEFT COVER
3	LED191T.03	ROTATING SHAFT
4	LED191T.04	LAMP BODY
5	LED191T.05	PCB
6	LED191T.06	ROTATING SHAFT, RIGHT COVER
7	LED191T.07	CROSS TAPPING SCREW ST2.9x15mm
8	LED191T.08	REFLECTOR COVER
9	LED191T.09	GLASS(PLASTIC)
10	LED191T.10	SEALING
11	LED191T.11	SEALING (FOR O/S)
12	LED191T.12	FRAME COVER
13	LED191T.13	CROSS TAPPING SCREW ST2.9x15mm
14	LED191T.14	O-RING
15	LED191T.15	STAINLESS STEEL BUCKLE
16	LED191T.16	BATTERY COVER
17	LED191T.17	SEAL RING
18	LED191T.18	SCREW M6x16mm
19	LED191T.19	HANDLE (RIGHT)

Item	Part No.	Description
20	LED191T.20	CROSS TAPPING SCREW ST4.2x18mm
21	LED191T.21	O-RING
22	LED191T.22	CROSS TAPPING SCREW ST2.9x10mm
23	LED191T.23	GEAR RING
24	LED191T.24	ALUMINIUM PIPE CONNECTOR
25	LED191T.25	CROSS TAPPING SCREW M4x6mm
26	LED191T.26	ALUMINIUM TUBE
27	LED191T.27	HANDLE SEALING RING
28	LED191T.28	CROSS TAPPING SCREW ST2.9x6mm
29	LED191T.29	PCB
30	LED191T.30	LITHIUM BATTERY 7.4V 8800AH
31	LED191T.31	HANDLE (LEFT)
32	LED191T.32	SWITCH BRACKET
33	LED191T.34	SWITCH BOARD ASSY
34	LED191T.34	SWITCH BOARD ASSY
35	LED191T.35	WATERPROOF CAP
36	LED191T.36	WATERPROOF CHARGING PROTECTION
--	LED191T.C	MAIN CHARGER (NOT SHOWN)

NOTE: It is our policy to continually improve products and as such we reserve the right to alter data, specifications and component parts without prior notice.

IMPORTANT: No liability is accepted for incorrect use of product.

WARRANTY: Guarantee is 12 months from purchase date, proof of which will be required for any claim.

Sealey Group, Kempson Way, Suffolk Business Park, Bury St Edmunds, Suffolk. IP32 7AR



01284 757500



01284 703534



sales@sealey.co.uk



www.sealey.co.uk