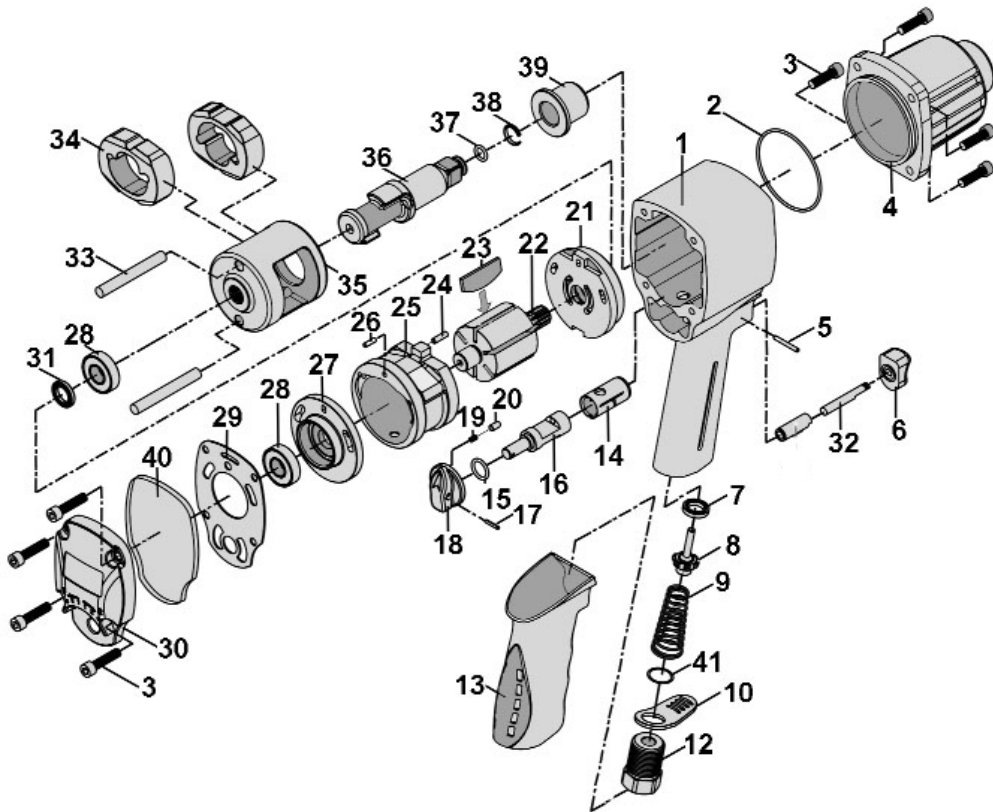


Parts Information:
Air Impact Wrench 1/2" Sq Drive Twin Hammer
Model No: GSA02



Item	Part No.	Description
1	GSA02.01	Housing
2	SA401.47	O-Ring
3	SCB520.SB	Socket Cap Bolt M5 x 20mm
4	GSA02.04	Hammer Case
5	GSA01.05	Spring Pin
6	GSA01.06	Trigger
7	GSA01.08	Valve Seat
8	GSA01.09	Throttle Valve
9	GSA01.10	Valve Spring
10	GSA01.11	Exhaust Deflector
12	GSA01.12	Air Inlet
13	GSA02.13	Plastic Grip
14	GSA01.14	Valve Bushing
15	GSA01.15	Washer, Rubber M8
16	GSA01.16	Rotary Shaft
17	GSA01.17	Pin
18	GSA01.18	Reverse Knob
19	GSA20.07	Spring
20	GSA20.08	Lock Pin
21	GSA02.21-N	End Plate (Front)
22	GSA01.22	Rotor

Item	Part No.	Description
23	GSA01.23	Rotor Blade
24	GSA01.24	Front Dowel Pin
25	GSA01.25	Cylinder
26	GSA01.26	Dowel Pin, Rear
27	GSA02.27	End Plate, Rear
28	B/6001ZZ	Bearing
29	GSA01.29	Cover Gasket, Rear
30	GSA01.30	Rear Cover
31	SA2/31	Oil Seal
32	GSA01.42	Trigger Shaft
33	GSA02.33	Hammer Pin
34	GSA02.34	Hammer
35	GSA02.35	Hammer Cage
36	GSA02.36	Anvil
37	GSA08.09-4	O-Ring
38	SA3S/18	Anvil Collar
39	GSA02.39	Anvil Bushing
40	GSA01.41	Collar, Rear Cover
41	VS3900.03	O-Ring
--	GSA02.21	End Plate, Front (Not Shown)

NOTE: It is our policy to continually improve products and as such we reserve the right to alter data, specifications and component parts without prior notice. There may be alternative versions of this product, please contact us should you require this information.

IMPORTANT: No liability is accepted for incorrect use of product. Spare parts must be fitted by a competent person

WARRANTY: Guarantee is 12 months from purchase date, proof of which will be required for any claim.