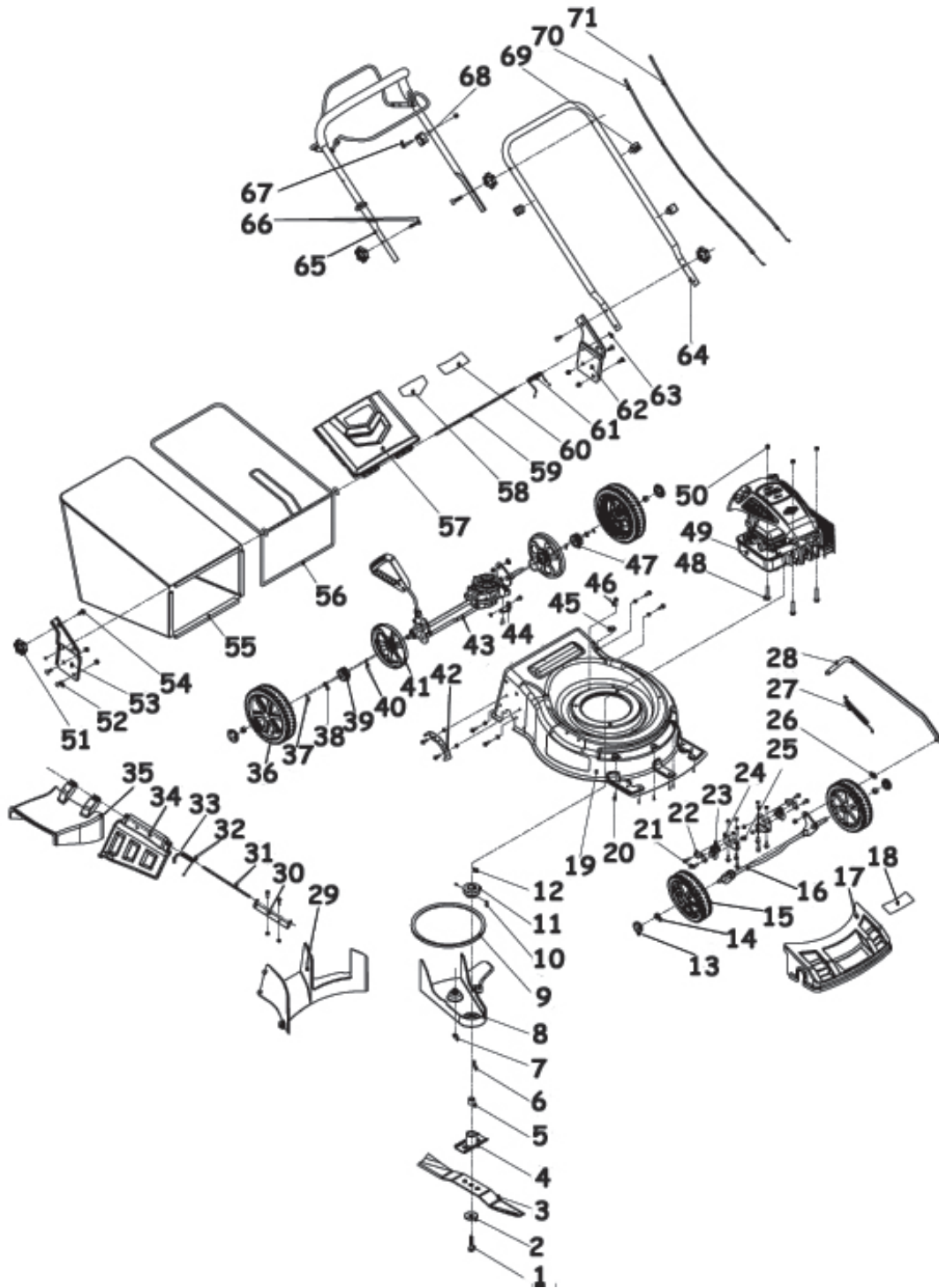




Parts Information:
Lawnmower 460mm Self-Propelled Petrol
158cc B&S 500
Model No: GL57



NOTE: It is our policy to continually improve products and as such we reserve the right to alter data, specifications and component parts without prior notice.

IMPORTANT: No liability is accepted for incorrect use of product.

WARRANTY: Guarantee is 12 months from purchase date, proof of which will be required for any claim.

Sealey Group, Kempson Way, Suffolk Business Park, Bury St Edmunds, Suffolk. IP32 7AR



01284 757500



01284 703534



sales@sealey.co.uk



www.sealey.co.uk



Parts Information:
**Lawnmower 460mm Self-Propelled Petrol
 158cc B&S 500
 Model No: GL57**

| | | |
|----|----------|-------------------------------------|
| 1 | GL57.01 | BOLT 3/8" |
| 2 | GL57.02 | BLADE PLATE |
| 3 | GL57.03 | CUTTING BLADE for GL57 |
| 4 | GL57.04 | BLADE HOLDER COMPONENTS |
| 5 | GL57.05 | WASHER M10 THICK M10 CENTRE |
| 6 | GL57.06 | FLAT PART |
| 7 | SN6.S | STEEL NUT M6 ZINC DIN934 (SINGLE) |
| 8 | GL57.08 | BELT COVER |
| 9 | V/M29 | V-BELT (ID-730) M29 |
| 10 | GSM610.S | GRUB SCREW M6x10 (SINGLE) |
| 11 | GL57.11 | BELT WHEEL |
| 12 | GL57.12 | SEMI - CIRCLE PART |
| 13 | GL57.13 | WHEEL CENTRE COVER |
| 14 | SN10.S | STEEL NUT M10 ZINC DIN934(SINGLE) |
| 15 | GL57.15 | WHEEL, FIXED (175x14x43) |
| 16 | GL57.16 | FRONT AXLE |
| 17 | GL57.17 | FRONT COVER |
| 18 | GL57.18 | FRONT COVER LABEL |
| 19 | GL57.19 | STEEL DECK |
| 20 | GL57.20 | RD HEAD S/T SCREW M3.8 X 16 |
| 21 | GL57.21 | BOLT (M6*12) |
| 22 | GL57.22 | CONNECTED SHAFT PLATE |
| 23 | GL57.23 | FIXED PART FOR SHAFT |
| 24 | GL57.24 | CONNECTED SHAFT HOLDER |
| 25 | SN6.S | STEEL NUT M6 ZINC DIN934 (SINGLE) |
| 26 | GL57.26 | RING OF HEIGHT ADJUSTING POLE |
| 27 | GL57.27 | TENSION SPRING OF HEIGHT ADJUSTMENT |
| 28 | GL57.28 | HEIGHT ADJUSTING POLE |
| 29 | GL57.29 | DAM-BOARD IN DECK |
| 30 | GL57.30 | FIXED PLATE OF SIDE DISCHARGE |
| 31 | GL57.31 | PIN OF SIDE DISCHARGE |
| 32 | GL57.32 | TORSIONAL SPRING OF SIDE DISCHARGE |
| 33 | GL57.33 | SPRING TUBE |
| 34 | GL57.34 | COVER OF SIDE DISCHARGE |
| 35 | GL57.35 | CONNECTOR OF SIDE DISCHARGE |
| 36 | GL57.36 | 8" WHEEL |
| 37 | GL57.37 | CIRCLIP FOR SHAFT (B-12) |

| Item | Part No. | Description |
|------|----------|---|
| 38 | GL57.38 | WASHER M12 |
| 39 | GL57.39 | GEAR - R |
| 40 | GL57.40 | ROUND PIN (5MM X 22) |
| 41 | GL57.41 | INNER COVE OF 8 INCH WHEEL |
| 42 | GL57.42 | FIXED PLATE OF HEIGHT ADJUSTMENT |
| 43 | GL57.43 | REAR BEARING COMPONENTS |
| 44 | GL57.44 | FIXED FRAME OF SELF-PROPELLED |
| 45 | GL57.45 | LINE TUBE |
| 46 | GL57.46 | BOLT (M6*25) |
| 47 | GL57.47 | GEAR - L |
| 48 | GL57.48 | BOLT (M8*30) |
| 49 | GL57.49 | B&S 500 ENGINE (SO) |
| 50 | SN8.S | STEEL NUT M8 ZINC DIN934 (SINGLE) |
| 51 | GL57.51 | LOCK KNOB |
| 52 | GL57.52 | BOLT (M8*14) |
| 53 | GL57.53 | COMPONENTS OF CONNECT PLATE (RIGHT HANDL) |
| 54 | GL57.54 | BOLT (M8*30) |
| 55 | GL57.55 | COLLECTION BAG (SO) |
| 56 | GL57.56 | COLLECTION BAG FRAME |
| 57 | GL57.57 | REAR COVER |
| 58 | GL57.58 | REAR COVER LABEL |
| 59 | GL57.59 | SPINDLE OF REAR COVER |
| 60 | GL57.60 | REAR COVER WARNING LABEL |
| 61 | GL57.61 | TORSIONAL SPRING OF REAR COVER |
| 62 | GL57.62 | CONNECT PLATE COMPONENTS (LEFT HANDLE) |
| 63 | GL57.63 | CIRCLIP 06 |
| 64 | GL57.64 | LOWER HANDLE |
| 65 | GL57.65 | UPPER HANDLE COMPONENTS |
| 66 | CBN835.S | COACH BOLT M8x35mm (SINGLE) |
| 67 | GL57.67 | BOLT (M6*40) |
| 68 | GL57.68 | CLAMP |
| 69 | GL57.69 | LINE RESTRAINT |
| 70 | GL57.70 | SELF-PROPELLED CLUTCH LINE |
| 71 | GL57.71 | ENGINE CLUTCH LINE |

NOTE: It is our policy to continually improve products and as such we reserve the right to alter data, specifications and component parts without prior notice.

IMPORTANT: No liability is accepted for incorrect use of product.

WARRANTY: Guarantee is 12 months from purchase date, proof of which will be required for any claim.

Sealey Group, Kempson Way, Suffolk Business Park, Bury St Edmunds, Suffolk. IP32 7AR



01284 757500



01284 703534



sales@sealey.co.uk



www.sealey.co.uk