



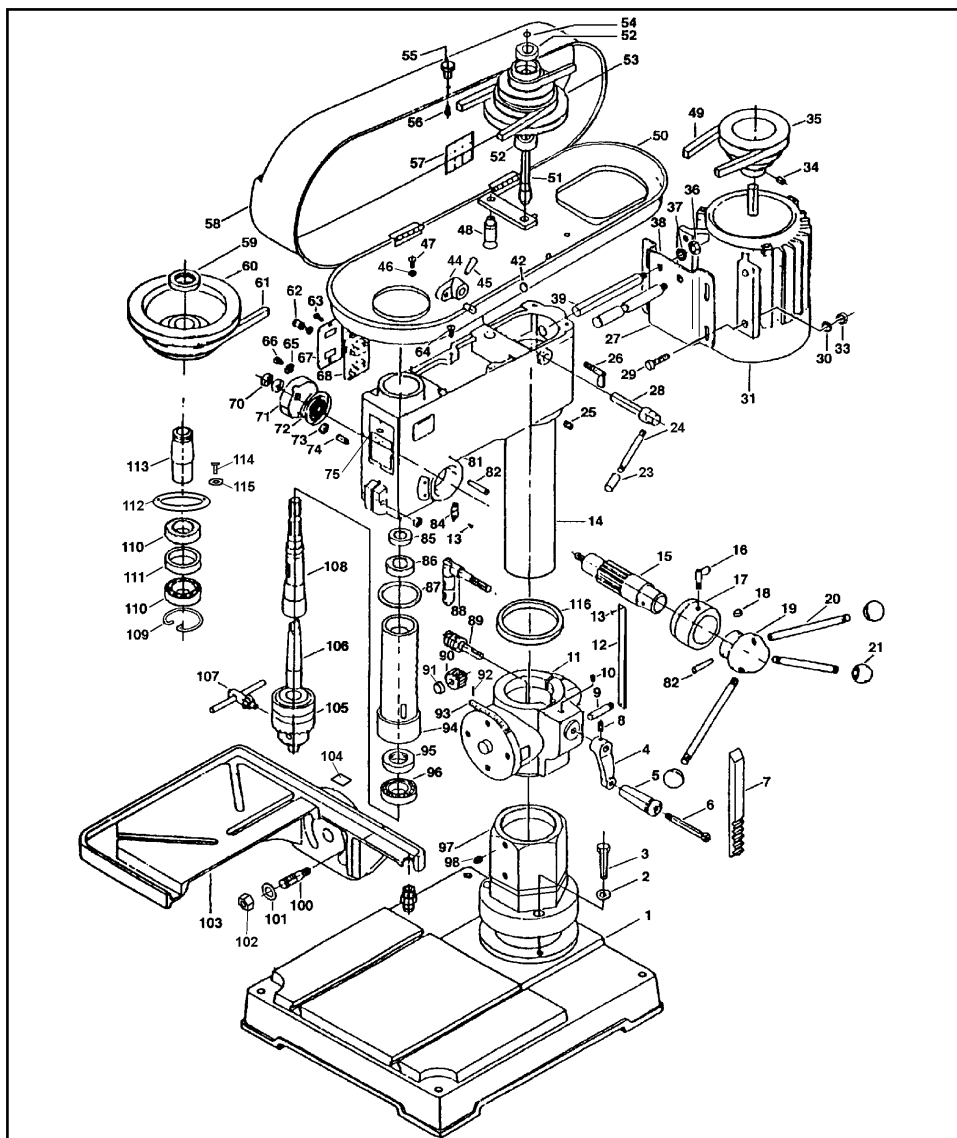
Sole UK Distributor,
Sealey Group,
Bury St. Edmunds,
Suffolk.

PARTS LIST FOR:

FLOOR MOUNTED PILLAR DRILL

Model No: **GDM250F**

Item	Part No.	Description
1	GDM250F/001	Base
2	GDM250F/002	Washer, Spring
3	GDM250F/003	Bolt
4	GDM250F/004	Handle, Crank
5	GDM250F/005	Handle, Grip
6	GDM250F/006	Bolt, Handle
7	GDM250F/007	Rack
8	GDM250F/008	Set Screw
9	GDM250F/009	Pin, Gear
10	GDM250F/010	Set Screw
11	GDM250F/011	Bracket, Table
12	GDM250F/012	Scale, Depth
13	GDM250F/013	Rivet
14	GDM250F/014	Column, 92mm
15	GDM250F/015	Shaft, Pinion
16	GDM250F/016	Screw, Wing
17	GDM250F/017	Bush, Pinion Shaft
18	GDM250F/018	Key
19	GDM250F/019	Hub, Pinion Shaft Handle
20	GDM250F/020	Handle, Feed
21	GDM250F/021	Knob
22	GDM250F/022	Knob
23	GDM250F/023	Rod
24	GDM250F/024	Set Screw
25	GDM250F/025	Screw, Wing
26	GDM250F/026	Screw, Wing
27	GDM250F/027	Bracket, Motor Support
28	GDM250F/028	Shaft, Lever
29	GDM250F/029	Screw
30	GDM250F/030	Washer, Spring
31	GDM250F/031	Motor, 1-1/2hp - 230V
32	GDM250F/032	Nut
33	GDM250F/033	Nut
34	GDM250F/034	Set Screw
35	GDM250F/035	Pulley, Motor
36	GDM250F/036	Nut
37	GDM250F/037	Washer, Spring
38	GDM250F/038	Plate, Motor Fastening
39	GDM250F/039	Bracket, Motor Support
40	GDM250F/040	Ring, Retaining
41	GDM250F/041	Lever, Adjusting
42	GDM250F/042	Pin, Taper
43	GDM250F/043	Washer, Spring
44	GDM250F/044	Screw
45	GDM250F/045	Rod, Fixed
46	GDM250F/046	V-M28
47	GDM250F/047	Pulley Cover, Lower
48	GDM250F/048	Shaft, Centre Pulley
49	GDM250F/049	Bearing
50	GDM250F/050	Pulley, Centre
51	GDM250F/051	Ring, Retaining
52	GDM250F/052	Knob
53	GDM250F/053	Pulley Cover, Upper
54	GDM250F/054	Nut, Ring
55	GDM250F/055	Pulley, Spindle
56	GDM250F/056	V-M28
57	GDM250F/057	Strain Relief
58	GDM250F/058	Screw
59	GDM250F/059	Screw
60	GDM250F/060	Clamp, Cable
61	GDM250F/061	Screw
62	GDM250F/062	Plate, Switch
63	GDM250F/063	Switch
64	GDM250F/064	Nut
65	GDM250F/065	Cap, Spring
66	GDM250F/066	Spring, Torsion
67	GDM250F/067	Nut
68	GDM250F/068	Set Screw
69	GDM250F/069	Rivet
70	GDM250F/070	Head, Pillar Drill
71	GDM250F/071	Pin
72	GDM250F/072	Indicator, Zero Mark
73	GDM250F/073	Indicator, Zero Mark
74	GDM250F/074	Spacer
75	GDM250F/075	Bearing
76	GDM250F/076	Gasket, Quill
77	GDM250F/077	Bolt, Handle Arm Clamp
78	GDM250F/078	Worm, Elevation
79	GDM250F/079	Gear, Helical
80	GDM250F/080	Spacer
81	GDM250F/081	Rivet
82	GDM250F/082	Gauge, Table Tilt
83	GDM250F/083	Quill
84	GDM250F/084	Bearing, Thrust
85	GDM250F/085	Bearing
86	GDM250F/086	Flange
87	GDM250F/087	Set Screw
88	GDM250F/088	Stud
89	GDM250F/089	Washer
90	GDM250F/090	Nut
91	GDM250F/091	Table
92	GDM250F/092	Indicator, Zero Mark
93	GDM250F/093	Chuck, 20mm
94	GDM250F/094	Arbor
95	GDM250F/095	Key, Chuck
96	GDM250F/096	Spindle
97	GDM250F/097	Ring, Retaining
98	GDM250F/098	Ring, Retaining
99	GDM250F/099	Bearing
100	GDM250F/100	Bearing
101	GDM250F/101	Spacer, Bearing
102	GDM250F/102	Cover, Bearing
103	GDM250F/103	Insert, Pulley
104	GDM250F/104	Screw
105	GDM250F/105	Washer, Spring
106	GDM250F/106	Collar, Rack
107	GDM250F/107	Flange
108	GDM250F/108	Set Screw
109	GDM250F/109	Stud
110	GDM250F/110	Washer
111	GDM250F/111	Nut
112	GDM250F/112	Table
113	GDM250F/113	Indicator, Zero Mark
114	GDM250F/114	Chuck, 20mm
115	GDM250F/115	Arbor
116	GDM250F/116	Key, Chuck



Item	Part No.	Description
97	GDM250F/097	Flange
98	GDM250F/098	Set Screw
100	GDM250F/100	Stud
101	GDM250F/101	Washer
102	GDM250F/102	Nut
103	GDM250F/103	Table
104	GDM250F/104	Indicator, Zero Mark
105	GDM250F/105	Chuck, 20mm
106	GDM250F/106	Arbor
107	GDM250F/107	Key, Chuck
108	GDM250F/108	Spindle
109	GDM250F/109	Ring, Retaining
110	GDM250F/110	Ring, Retaining
111	GDM250F/111	Bearing
112	GDM250F/112	Spacer, Bearing
113	GDM250F/113	Cover, Bearing
114	GDM250F/114	Insert, Pulley
115	GDM250F/115	Screw
116	GDM250F/116	Washer, Spring
		Collar, Rack

Note: Item 68 - Switch
Please note that the position of the switch may vary.
If your drill is equipped with a side mounted switch the part number is as indicated in the Parts List.
If, however, the switch is front mounted, with a red safety button, then the part number is GDM250F/068CX.

Original Date: 021199
Issue Date: 021199
Version No: 1
Date Modified: 1st issue



01284 757500



01284 703534

E-mail: sales@sealey.co.uk