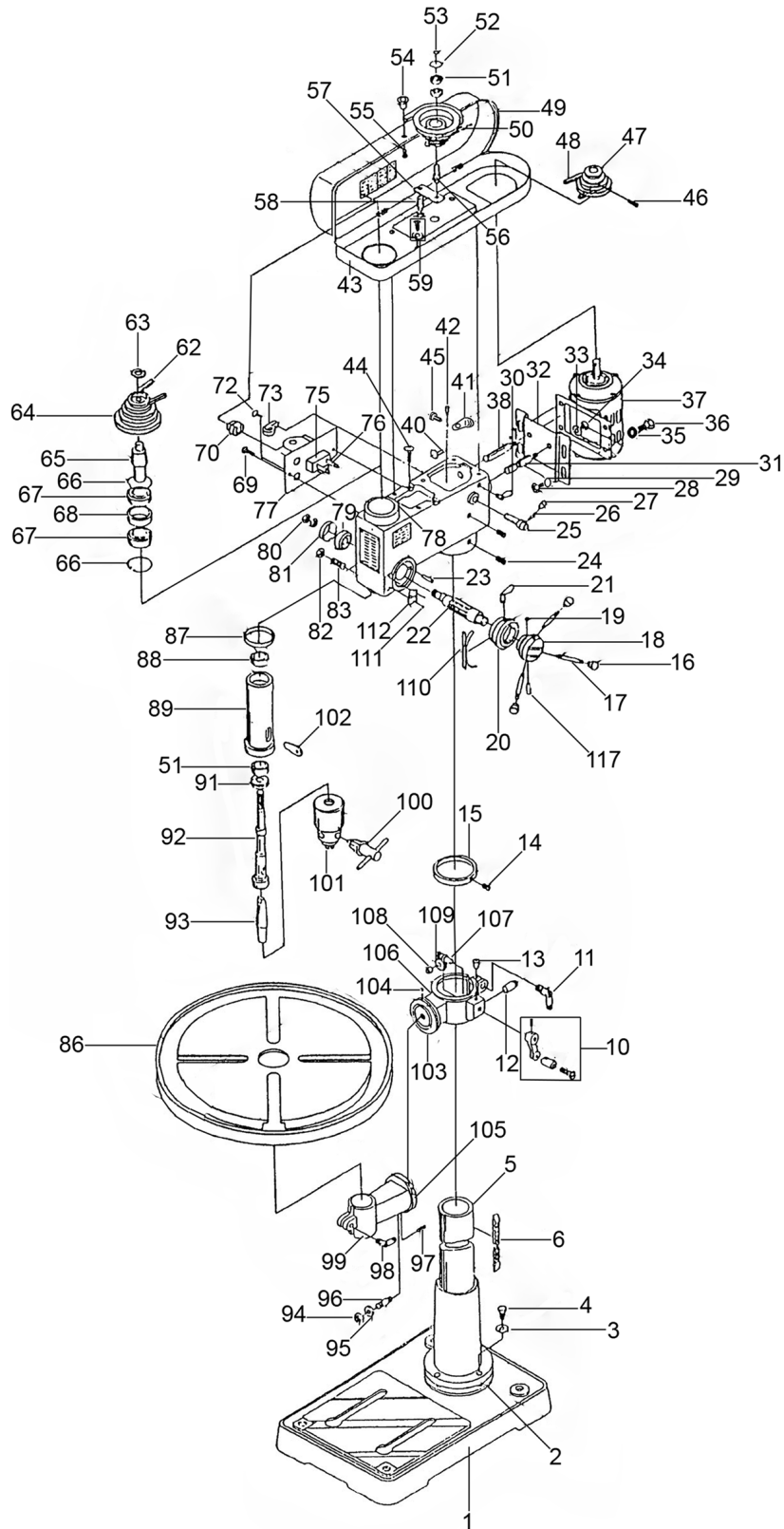




Parts Information:  
**Pillar Drill Bench 16-Speed 1070mm Height  
650W/230V  
Model No: GDM150B**



**NOTE:** It is our policy to continually improve products and as such we reserve the right to alter data, specifications and component parts without prior notice. There may be alternative versions of this product, please contact us should you require this information.

**IMPORTANT:** No liability is accepted for incorrect use of product. Spare parts must be fitted by a competent person

**WARRANTY:** Guarantee is 12 months from purchase date, proof of which will be required for any claim.

Sealey Group, Kempson Way, Suffolk Business Park, Bury St Edmunds, Suffolk. IP32 7AR



01284 757500



01284 703534



sales@sealey.co.uk



www.sealey.co.uk



Parts Information:  
**Pillar Drill Bench 16-Speed 1070mm Height  
 650W/230V  
 Model No: GDM150B**

Item	Part No.	Description
1	GDM150B/001	Base
2	GDM150B/002	Flange
3	GDM150B/003	Washer, Spring
4	GDM150B/004	Screw
5	GDM150B/005	Column
6	GDM150B/006	Rack
10	GDM150B/7-10	Handle Arm Assembly
11	GDM150B/011	Bolt, Clamp
12	GDM150B/012	Shaft, Gear
13	GDM150B/013	Cup
14	GDM150B/014	Screw, Set
15	GDM150B/015	Collar
16	GDM250F/021	Knob
17	GDM150B/017	Handle, Feed
18	GDM150B/018	Hub, Feed Handle
19	GDM150B/019	Key
20	GDM150B/020	Sleeve, Depth Scale
21	GDM150B/021	Screw, Wing Clamp
22	GDM150B/022	Pinion, Feed
23	GDM150B/023	Pin, Stop
24	GDM150B/024	Screw, Set
25	GDM150B/025	Lever
26	GDM150B/026	Rod
27	GDM150B/027	Knob
28	GDM150B/028	Screw, Motor Lock
29	GDM150B/029	Washer, Lock
30	GDM150B/030	Screw, Thumb
31	GDM150B/031	Bracket
32	GDM150B/032	Mount
33	GDM150B/033	Washer, Spring
34	GDM150B/034	Nut
35	GDM150B/035	Washer
36	GDM150B/036	Screw, Hex
37	GDM150B/037	Motor
38	GDM150B/038	Bracket
40	GDM150B/040	Ring, Retaining
41	GDM150B/041	Lever, Adjusting
42	GDM150B/042	Pin, Lock
43	GDM150B/043	Cover, Pulley
44	GDM150B/044	Screw, Pan Head
45	GDM150B/045	Pin
46	GDM92B/60	Set Screw, Headless

Item	Part No.	Description
47	GDM150B/047	Pulley, Motor
48	V/M22	V-Belt (ID-560) M22
49	GDM150B/049	Upper Cover, Pulley
50	GDM150B/050	Pulley, Centre
51	B/6202Z	Bearing
52	GDM150B/052	Ring, Retaining
53	GDM150B/053	Ring, Retaining
54	GDM150B/054	Knob
55	GDM150B/055	Screw
56	GDM150B/056	Pin, Pivot
57	GDM150B/057	Arm, Pivot
58	GDM150B/058	Pin, Pivot
59	GDM150B/059	Screw (c/w Washer)
62	V/M26	V-Belt (ID-650) M26
63	GDM150B/063	Nut, Ring
64	GDM150B/064	Pulley, Spindle
65	GDM150B/065	Spindle
66	GDM150B/066	Ring, Retaining
67	B/6205Z	Bearing
68	GDM150B/068	Spacer, Bearing
69	GDM150B/069	Screw, Pan Head
70	GDM150B/070	Strain Relief
72	GDM150B/072	Screw, Pan Head
73	GDM150B/073	Clamp, Cord
75	GDM250F/068	Switch, Box-Type
76	GDM150B/076	Arm Switch
77	GDM150B/077	Switch Plate
78	GDM150B/078	Head
79	GDM150B/079	Spring, Tension
80	GDM150B/080	Nut, Hex
81	GDM150B/081	Cap, Spring
82	GDM150B/082	Nut, Hex
83	GDM150B/083	Screw, Slotted Set
86	GDM150B/086	Table
87	GDM150B/087	Gasket
88	B/6203Z	Bearing
89	GDM150B/089	Quill
91	B/6204Z	Bearing
92	GDM150B/092	Spindle
93	GDM150B/093	Arbor
94	GDM150B/094	Nut, Hex

**NOTE:** It is our policy to continually improve products and as such we reserve the right to alter data, specifications and component parts without prior notice. There may be alternative versions of this product, please contact us should you require this information.

**IMPORTANT:** No liability is accepted for incorrect use of product. Spare parts must be fitted by a competent person

**WARRANTY:** Guarantee is 12 months from purchase date, proof of which will be required for any claim.

**Sealey Group**, Kempson Way, Suffolk Business Park, Bury St Edmunds, Suffolk. IP32 7AR



01284 757500



01284 703534



sales@sealey.co.uk



www.sealey.co.uk



Parts Information:  
**Pillar Drill Bench 16-Speed 1070mm Height  
650W/230V  
Model No: GDM150B**

Item	Part No.	Description
95	GDM150B/095	Washer
96	GDM150B/096	Stud
97	GDM150B/097	Screw, Set
98	GDM150B/098	Bolt, Table Clamp Lock
99	GDM150B/099	Arm, Table
100	GDM92B/44	Chuck Key
101	GDM150B/101	Chuck
102	GDM150B/102	Wedge
103	GDM150B/103	Scale, Angle
104	GDM150B/104	Rivet
105	GDM150B/105	Indicator, Zero Mark
106	GDM150B/106	Support, Table
107	GDM150B/107	Worm, Elevation
108	GDM150B/108	Sleeve, Wheel

Item	Part No.	Description
109	GDM150B/109	Worm, Helical
110	GDM150B/110	Indicator, Depth Scale
111	GDM150B/111	Rivet
112	GDM150B/112	Indicator, Zero Mark
117	GDM150B/117	Pin, Lock
--	GDM150B/071	Socket, Lamp (Not Shown)
--	GDM150B/074	Bracket, Socket (Not Shown)
--	GDM150B/084	Rivet (Not Shown)
--	GDM150B/116	Rivet (Not Shown)
--	MA10/58MM	Wood Mortising Attachment (Not Shown)
--	PDM170F-4-15	Switch, Power (c/w Cover) (Not Shown)
--	C/150-250	Capacitor (Not Shown)
--	DPG100	Drill Press Guard (Not Shown)

**NOTE:** It is our policy to continually improve products and as such we reserve the right to alter data, specifications and component parts without prior notice. There may be alternative versions of this product, please contact us should you require this information.

**IMPORTANT:** No liability is accepted for incorrect use of product. Spare parts must be fitted by a competent person

**WARRANTY:** Guarantee is 12 months from purchase date, proof of which will be required for any claim.

**Sealey Group**, Kempson Way, Suffolk Business Park, Bury St Edmunds, Suffolk. IP32 7AR



01284 757500



01284 703534



sales@sealey.co.uk



www.sealey.co.uk