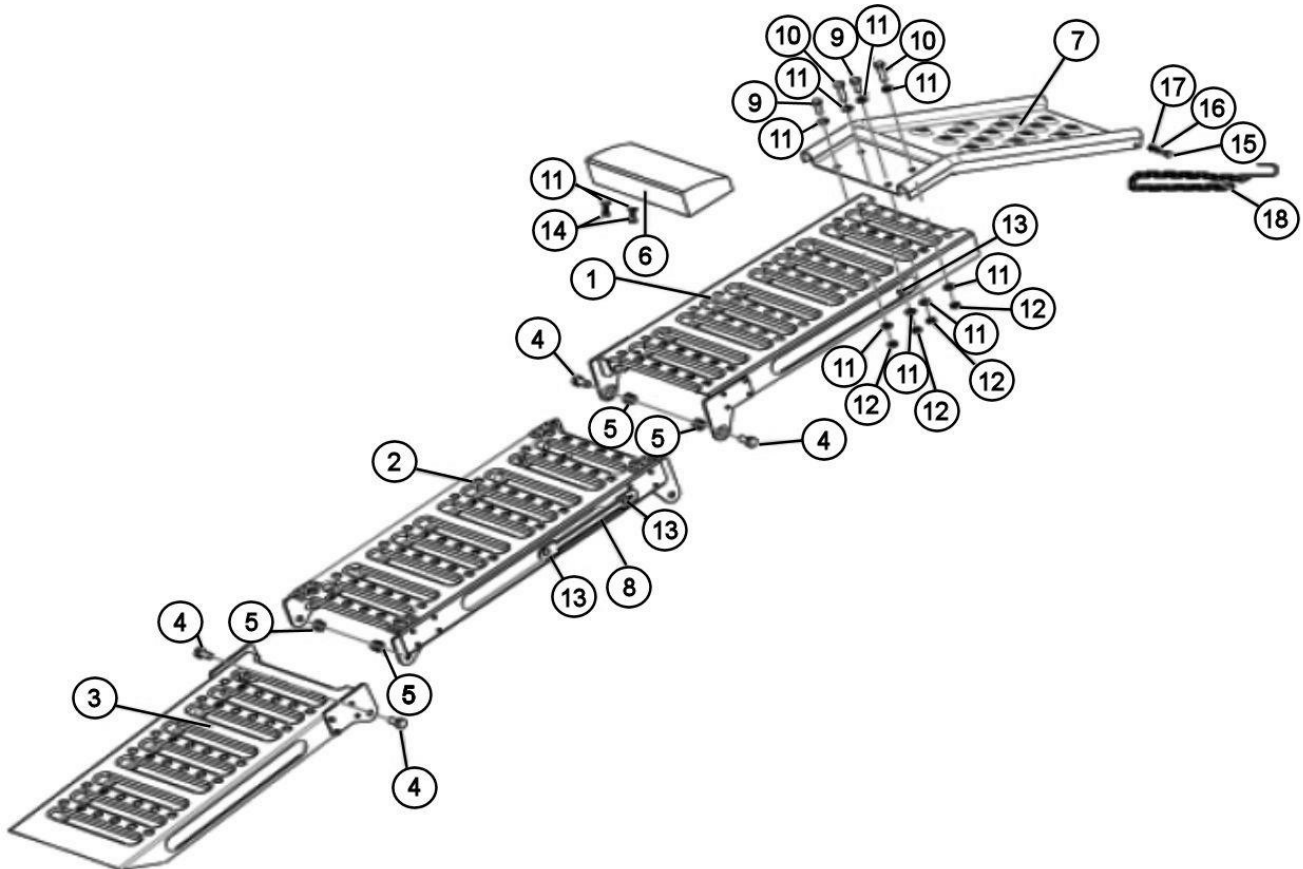


Parts Information:  
**Steel Folding Loading Ramps 500kg**  
**Capacity per Pair**  
**Model No: FCR500**



Item	Part No.	Description
1	FCR500.01	RAMP (UPPER)
2	FCR500.02	RAMP (CENTRE)
3	FCR500.03	RAMP (LOWER)
4	FCR500.04	BOLT M10x20
5	SN10.S	STEEL NUT M10 ZINC DIN934(SINGLE)
6	FCR500.06	WHEEL STOP
7	FCR500.07	RAMP (ANGLED)
8	FCR500.08	SIDE HANDLE
9	FCR500.09	BOLT M8x20

Item	Part No.	Description
10	FCR500.10	BOLT M8x40
11	FCR500.11	FLAT WASHER M8
12	SN8.S	STEEL NUT M8 ZINC DIN934 (SINGLE)
13	FCR500.13	RIVET
14	FCR500.14	BOLT M8x16
15	FCR500.15	BOLT M6x16
16	FCR500.16	FLAT WASHER M6
17	SN6.S	STEEL NUT M6 ZINC DIN934 (SINGLE)
18	FCR500.18	SAFETY CHAIN (c/w HOOK)

**NOTE:** It is our policy to continually improve products and as such we reserve the right to alter data, specifications and component parts without prior notice.

**IMPORTANT:** No liability is accepted for incorrect use of product.

**WARRANTY:** Guarantee is 12 months from purchase date, proof of which will be required for any claim.