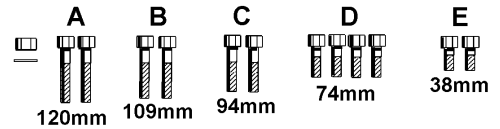


Thank you for purchasing a Sealey product. Manufactured to a high standard this product will, if used according to these instructions and properly maintained, give you years of trouble free performance.

IMPORTANT: PLEASE READ THESE INSTRUCTIONS CAREFULLY. NOTE THE SAFE OPERATIONAL REQUIREMENTS, WARNINGS AND CAUTIONS. USE THIS PRODUCT CORRECTLY AND WITH CARE FOR THE PURPOSE FOR WHICH IT IS INTENDED. FAILURE TO DO SO MAY CAUSE DAMAGE OR PERSONAL INJURY, AND WILL INVALIDATE THE WARRANTY. PLEASE KEEP INSTRUCTIONS SAFE FOR FUTURE USE.

1. SAFETY INSTRUCTIONS

- p **WARNING!** Ensure all health and safety, local authority, and general workshop practice regulations are strictly adhered to when using this equipment.
- 3 Before using the stand ensure it is in sound condition, and good working order.
- 3 Replace or repair damaged parts. Use recommended parts only. Non authorised parts may be dangerous and will invalidate the warranty.
- 3 Keep the Stand clean for best and safest performance.
- 3 Locate the stand in an adequate working area for its function, keep area clean and tidy and free from unrelated materials, and ensure there is adequate lighting.
- 3 Use on a firm, level surface capable of sustaining the Stand and the load.
- 3 Maintain correct balance and footing. Ensure the floor is not slippery and wear non slip shoes.
- 3 Ensure all non essential persons keep a safe distance whilst the Stand is in use.
- 3 Lock Mounting Plate in position before fixing a load, and ensure the load is centred and securely mounted on the locking plate.
- 3 Ensure the Stand and the load are stable.
- 3 To move a loaded stand, steady the load and push from behind the main post of the stand so that the front wheel is at the head of the load. DO NOT pull the unit backwards or push from the load side as this may cause the stand to tip. Also ensure surface over which the stand it to travel is strong enough to take the stand and load and that it is not cracked, uneven or obstructed.
- 7 DO NOT operate unit if damaged.
- 7 DO NOT allow untrained persons to operate the stand.
- 7 DO NOT exceed the rated capacity of 900kg.
- s **DANGER:** DO NOT work under an engine mounted on the Stand.
- 7 DO NOT use the Stand for purposes other than which it is designed.
- 3 When not in use store stand in a safe, dry, childproof area.



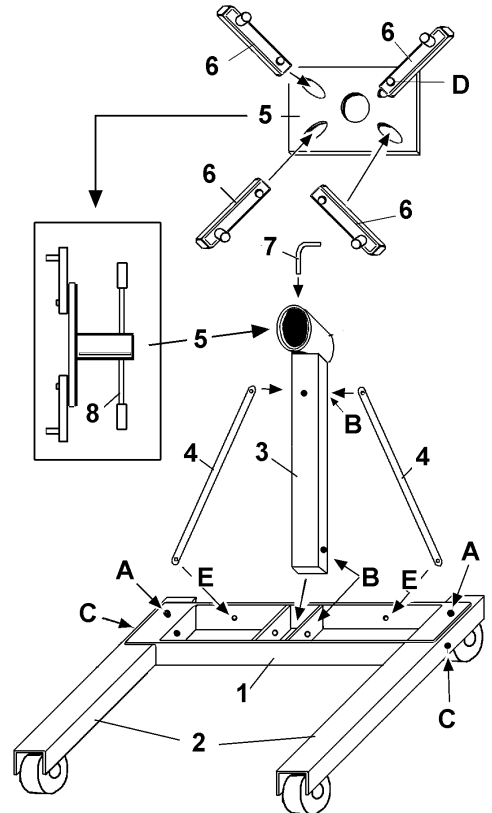
2. ASSEMBLY & PARTS LIST

- 2.1. Attach the base frame (1) to each legs (2) with nuts, washer and bolts (A).
- 2.2. Slot main post (3) between brackets in base (1) and loosely secure with bolt (B).
- 2.3. Fit main post braces (4) with bolt (B) and secure to base frame (1) with bolts (E), and tighten both bolts (B and E).
- 2.4. Fix mounting arms (6) to head assembly (5) with bolts (D).
- 2.5. Pass head assembly (5) extension through the head of main post (3) and lock with pin (7).
- 2.6. Pass head assembly handle (8) through the end of the assembly extension and check that handle grips are correctly pushed onto the handle.
- 2.7. Check that all nuts and bolts are tight and that the frame is not damaged. The stand is now ready for use.

SPECIFICATIONS:

Max capacity900 kg Height1000 mm
 Width820 mm Weight42 kg
 Length1300 mm

PARTS LIST		
ITEM	PART NO	DESCRIPTION
1	ES900-01	BASE FRAME
2	ES900-02	SIDE LEGS WITH CASTORS
3	ES900-03	MAIN POST
4	ES900-04	MAIN POST BRACE
5	ES900-05	HEAD ASSEMBLY
6	ES900-06	MOUNTING ARMS
7	ES900-07	LOCK PIN
8	ES900-08	HEAD ASSEMBLY HANDLE
9	ES900-09	WASHERS, FLAT
10	ES900-10	HEX. NUTS



NOTE: It is our policy to continually improve products and as such we reserve the right to alter data, specifications and component parts without prior notice.

IMPORTANT: No liability is accepted for incorrect use of this equipment

WARRANTY: Guarantee is 12 months from purchase date, proof of which will be required for any claim.

INFORMATION: Call us for a copy of our latest catalogue on 01284 757525 and leave your full name and address including your postcode.