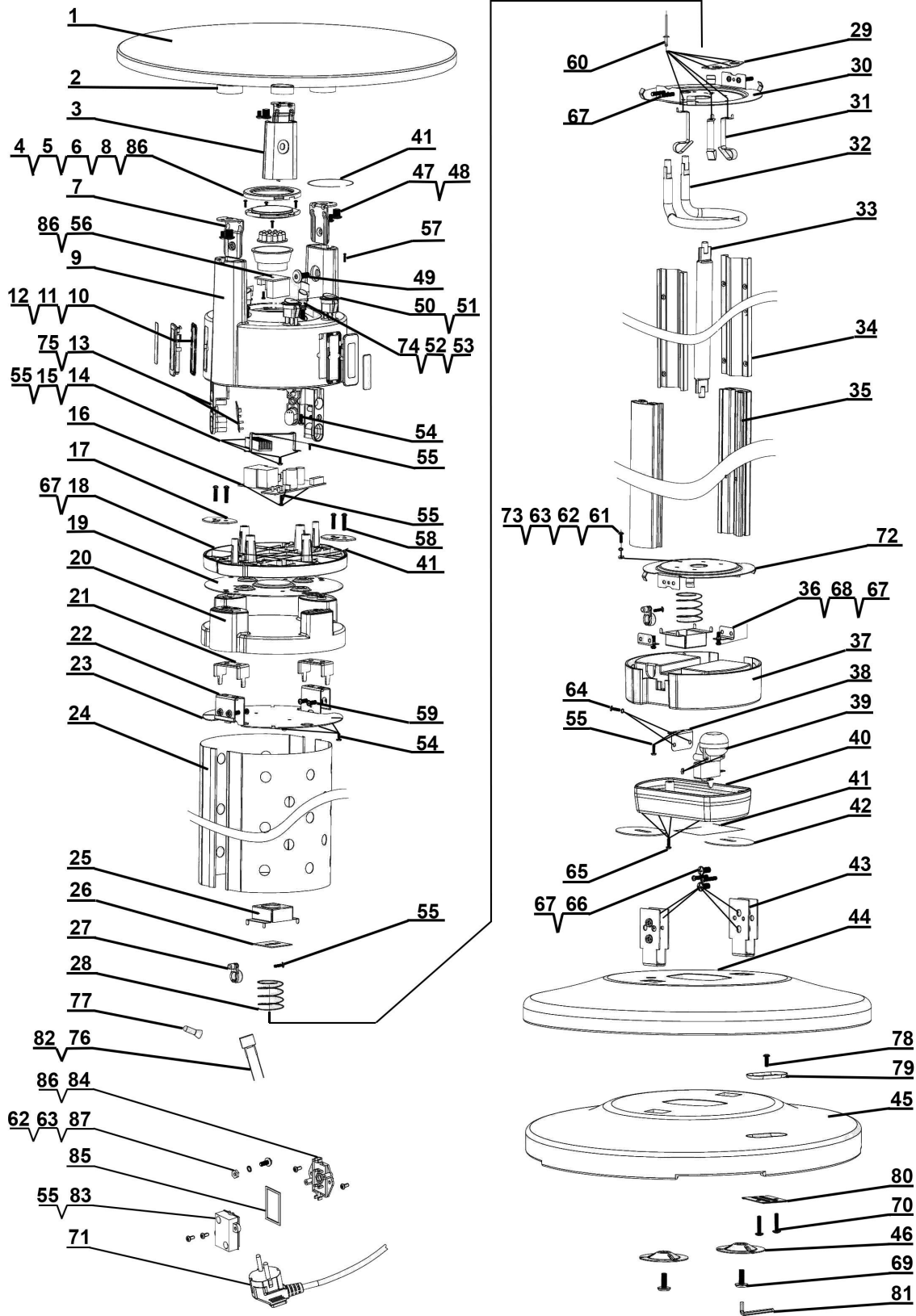


Parts Information:
Bistro Table Heater, LED & Sensors, Glass Top, 65 / 95cm
Model No: DG62 & DG63



NOTE: It is our policy to continually improve products and as such we reserve the right to alter data, specifications and component parts without prior notice. There may be alternative versions of this product, please contact us should you require this information.
IMPORTANT: No liability is accepted for incorrect use of product. Spare parts must be fitted by a competent person
WARRANTY: Guarantee is 12 months from purchase date, proof of which will be required for any claim.

Item	Part No.	Description
1	DG10328	Table Top
2	DG10329	Table Top Fixture
3	DG10330	Support
4	DG10331	LED Deco. Ring
5	DG10332	Lens
6	DG10333	LED Assembly
7	DG10334	Table Top Bracket
8	DG10335	Fibreglass Element Seat
9	DG10336	Control Box
10	DG10337	IR Lens Seal Ring
11	DG10338	IR Lens Base
12	DG10339	IR Lens
13	DG10340	Transmitter Bracket
14	DG10341	Cooling Aluminum
15	DG10342	Cooling Aluminum Bracket
16	DG10343	Main PCB
17	DG10344	Washer
18	DG10345	Control Box Cover
19	DG10346	Steel Protection Plate
20	DG10347	Control Box Cover Support
21	DG10348	Support Bracket
22	DG10349	Upper Bracket
23	DG10350	Heat Resistor
24	DG10351	Mesh Guard (for DG62 only)
	DG10402	Mesh Guard (for DG63 only)
25	DG10352	Heating Element Bracket
26	DG10353	Heating Element Clamp
27	DG10354	Internal Wire Washer
28	DG10355	Spring
29	DG10356	Heating Element Clamp
30	DG10357	Frame Bracket
31	DG10358	Heating Element Bracket
32	DG10359	Carbon Fibre Heating Element 240V/380W
33	DG10360	Carbon Fibre Heating Element 220V-240V/1000-1200W (for DG62 only)
	DG10403	Carbon Fibre Heating Element 220V-240V/1350-1600W (for DG63 only)
34	DG10361	Reflector (for DG62 only)
	DG10404	Reflector (for DG63 only)

Item	Part No.	Description
35	DG10362	Reflector Frame Support (for DG62 only)
	DG10405	Reflector Frame Support (for DG63 only)
36	DG10363	Lower Control Box Clip
37	DG10364	Lower Control Box
38	DG10365	Tip Switch Bracket
39	DG10366	Tip Switch
40	DG10367	Cord Cover
41	DG10368	Seal
42	DG10369	Base Cover Washer
43	DG10370	Base Bracket
44	DG10371	Base Cover
45	DG10372	Base
46	DG10373	Washer
47	DG10374	Machine Screw M8x6mm
48	MSP46.S	Machine Screw Pan Head Phillips M4 X 6mm
49	SCB616.S	Socket Cap Bolt M6 x 16mm
50	DG10375	Switch 16A/55
51	DG10376	Switch 16A/125VAC
52	DG10377	Plastic Plug
53	MSP545.S	Machine Screw Pan Head Phillips M5 X 45mm
54	DG10378	Self-Tapping Screw 3x10mm
55	DG10378	Self-Tapping Screw 3x10mm
56	DG10379	LED Driver
57	DG10380	Self-Tapping Screw 4x16mm
58	DG10381	Machine Screw M4x38mm
59	DG10382	Self-Tapping Screw 4x18mm
60	DG10383	Rivet
61	MSP48.S	Machine Screw Pan Head Phillips M4 X 8mm
62	SWM4.S	Spring Washer M4 Zinc
63	SN4.S	Steel Nut M4 Zinc
64	MSP425.S	Machine Screw Pan Head Phillips M4 x 25mm
65	DG10384	Self-Tapping Screw 3x12mm
66	MSP618.S	Machine Screw Pan Head Phillips M6 x 18mm
67	DG10385	Self-Tapping Screw 4x12mm
68	MSP412.S	Machine Screw Pan Head Phillips M4 X 12mm
69	SCB620.S	Socket Cap Bolt M6 x 20mm
70	MSP430.S	Machine Screw Pan Head Phillips M4 X 30mm
71	DG10386	Power Supply Cord

NOTE: It is our policy to continually improve products and as such we reserve the right to alter data, specifications and component parts without prior notice. There may be alternative versions of this product, please contact us should you require this information.

IMPORTANT: No liability is accepted for incorrect use of product. Spare parts must be fitted by a competent person

WARRANTY: Guarantee is 12 months from purchase date, proof of which will be required for any claim.



Parts Information:
Bistro Table Heater, LED & Sensors, Glass
Top, 65 / 95cm
Model No: DG62 & DG63

Item	Part No.	Description
72	DG10387	Frame Bracket
73	DG10388	Star Washer
74	DG10389	Silicone Rubber Tube
75	DG10390	IR Lens Box
76	DG10391	Filter
77	DG10392	Connector Cap
78	DG10393	Self-Tapping Screw 4x10mm
79	DG10394	Nut Plate
80	DG10395	Cord Clip

Item	Part No.	Description
81	DG10396	Hex Key
82	DG10397	Resistor
83	DG10398	Wiring Box Cover (Small)
84	DG10399	Wiring Box Bottom (Small)
85	DG10400	Seal Ring
86	DG10401	Self-Tapping Screw 3x8mm
87	MSP48.S	Machine Screw Pan Head Phillips M4 X 8 mm
--	DG10406	Accessory Kit for DG62 & DG63

NOTE: It is our policy to continually improve products and as such we reserve the right to alter data, specifications and component parts without prior notice. There may be alternative versions of this product, please contact us should you require this information.

IMPORTANT: No liability is accepted for incorrect use of product. Spare parts must be fitted by a competent person

WARRANTY: Guarantee is 12 months from purchase date, proof of which will be required for any claim.

Dellonda, Kempson Way, Suffolk Business Park, Bury St Edmunds, Suffolk. IP32 7AR



01284 757575



support@dellonda.co.uk



www.dellonda.co.uk