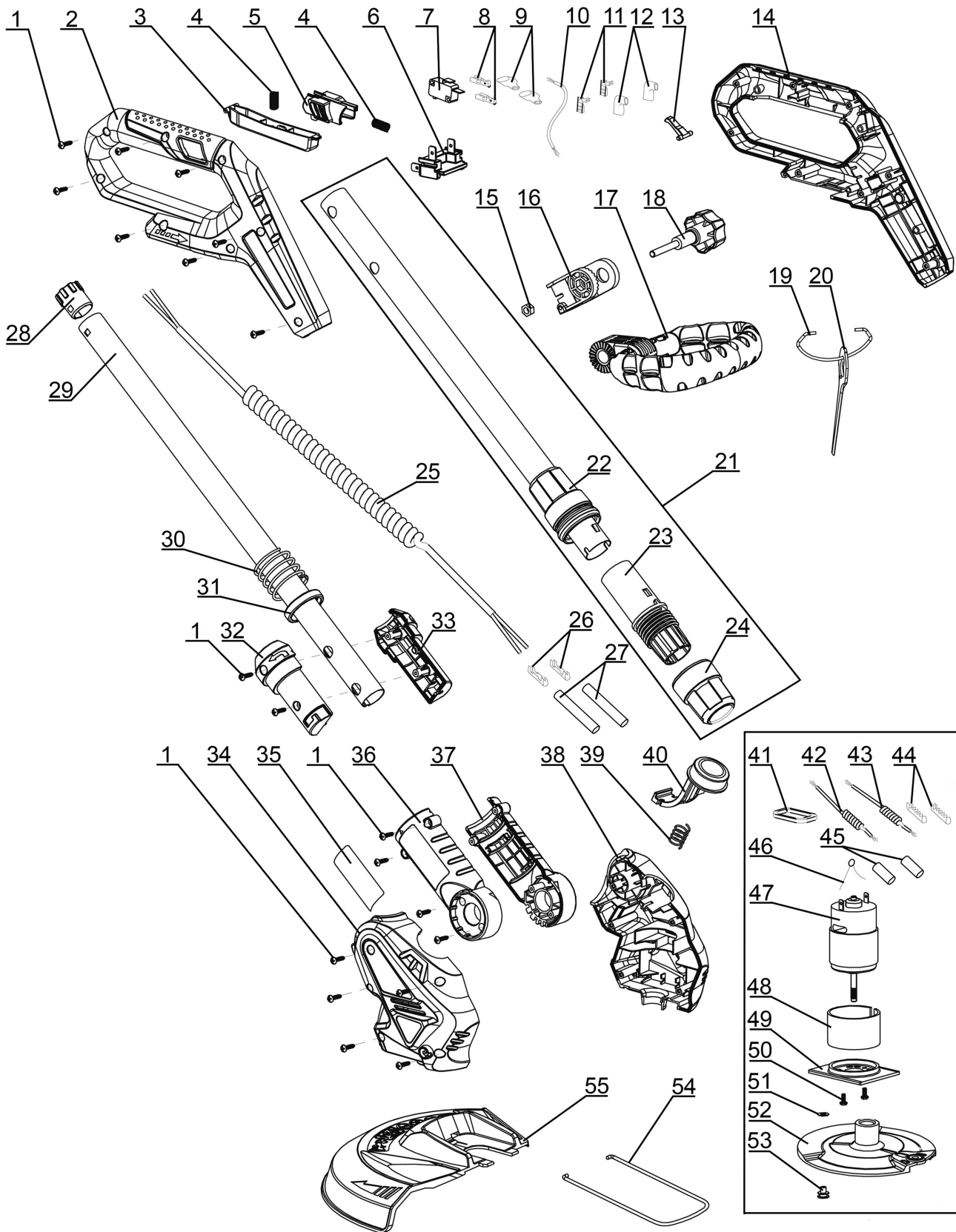




Parts Information:
Strimmer Cordless 20V SV20 Series - Body Only
Model No: CS20V



NOTE: It is our policy to continually improve products and as such we reserve the right to alter data, specifications and component parts without prior notice. There may be alternative versions of this product, please contact us should you require this information.

IMPORTANT: No liability is accepted for incorrect use of product. Spare parts must be fitted by a competent person

WARRANTY: Guarantee is 12 months from purchase date, proof of which will be required for any claim.

Sealey Group, Kempson Way, Suffolk Business Park, Bury St Edmunds, Suffolk. IP32 7AR



01284 757500



sales@sealey.co.uk



www.sealey.co.uk



Parts Information:
Strimmer Cordless 20V SV20 Series - Body Only
Model No: CS20V

Item	Part No.	Description
1	CS20V.01	Self-Tapping Screw 3.5 x 13mm
2	CS20V.02	Main Handle (Right Side)
3	CS20V.03	Switch Trigger
4	CS20V.04	Switch Button Spring
5	CS20V.05	Switch Lock Button
6	CS20V.06	Switch Connection
7	CS20V.07	Switch
8	CS20V.08	Terminal Lock
9	CS20V.09	PVC Sheath
10	CS20V.10	Connection Wire
11	CS20V.11	Terminal
12	CS20V.12	Terminal Protection
13	CS20V.13	Switch Latch
14	CS20V.14	Main Handle (Left Side)
15	SN6.S	Steel Nut M6
16	CS20V.16	Roller Bracket
17	CS20V.17	Hand Grip
18	CS20V.18	Threaded Knob
19	CS20V.19	Blade Storing Ring
20	CS20VB	Plastic Blades for CS20V (Pack of 10)
21	CS20V.21	Upper Extension Tube (c/w Parts 22-24)
22	CS20V.22	Upper Extension Tube Top Cover
23	CS20V.23	Upper Extension Tube Middle Cover
24	CS20V.24	Upper Extension Tube Lower Cover
25	CS20V.25	Wire Coil
26	CS20V.26	Wiring Terminal
27	CS20V.27	Heat Shrink Tube (ø4 x 30)
28	CS20V.28	Lower Extension Tube Lower Sleeve
29	CS20V.29	Lower Extension Tube

Item	Part No.	Description
30	CS20V.30	Rotary Spring
31	CS20V.31	Rotary Spring Ring
32	CS20V.32	Rotary Inner Cover, Right
33	CS20V.33	Rotary Inner Cover, Left
34	CS20V.34	Right Side Housing
35	CS20V.35	Rating Label
36	CS20V.36	Rotary Outer Cover, Right
37	CS20V.37	Rotary Outer Cover, Left
38	CS20V.38	Left Side Housing
39	CS20V.39	Spring for Edge Adjustment
40	CS20V.40	Foot Push
41	CS20V.41	Square Magnetic Ring
42	CS20V.42	Wire Coil (A)
43	CS20V.43	Wire Coil (B)
44	CS20V.44	Teethed Bar (Small)
45	CS20V.45	Heat Shrink Tube (ø3 x 12)
46	CS20V.46	Capacitor
47	CS20V.47	Motor
48	CS20V.48	Motor Protection
49	CS20V.49	Motor Support
50	MSP48.S	Machine Screw Pan Head Phillips M4 x 8 mm
51	FWM4.S	Flat Washer M4
52	CS20V.52	Blade Holder
53	CS20V.53	Rivet
54	CS20V.54	Protector Guard
55	CS20V.55	Guard
--	CS20V.56	Noise Label (Not Shown)
--	CS20V.57	Warning Label (Not Shown)
--	CS20V.58	Switch (Not Shown)

NOTE: It is our policy to continually improve products and as such we reserve the right to alter data, specifications and component parts without prior notice. There may be alternative versions of this product, please contact us should you require this information.

IMPORTANT: No liability is accepted for incorrect use of product. Spare parts must be fitted by a competent person

WARRANTY: Guarantee is 12 months from purchase date, proof of which will be required for any claim.

Sealey Group, Kempson Way, Suffolk Business Park, Bury St Edmunds, Suffolk. IP32 7AR



01284 757500



sales@sealey.co.uk



www.sealey.co.uk