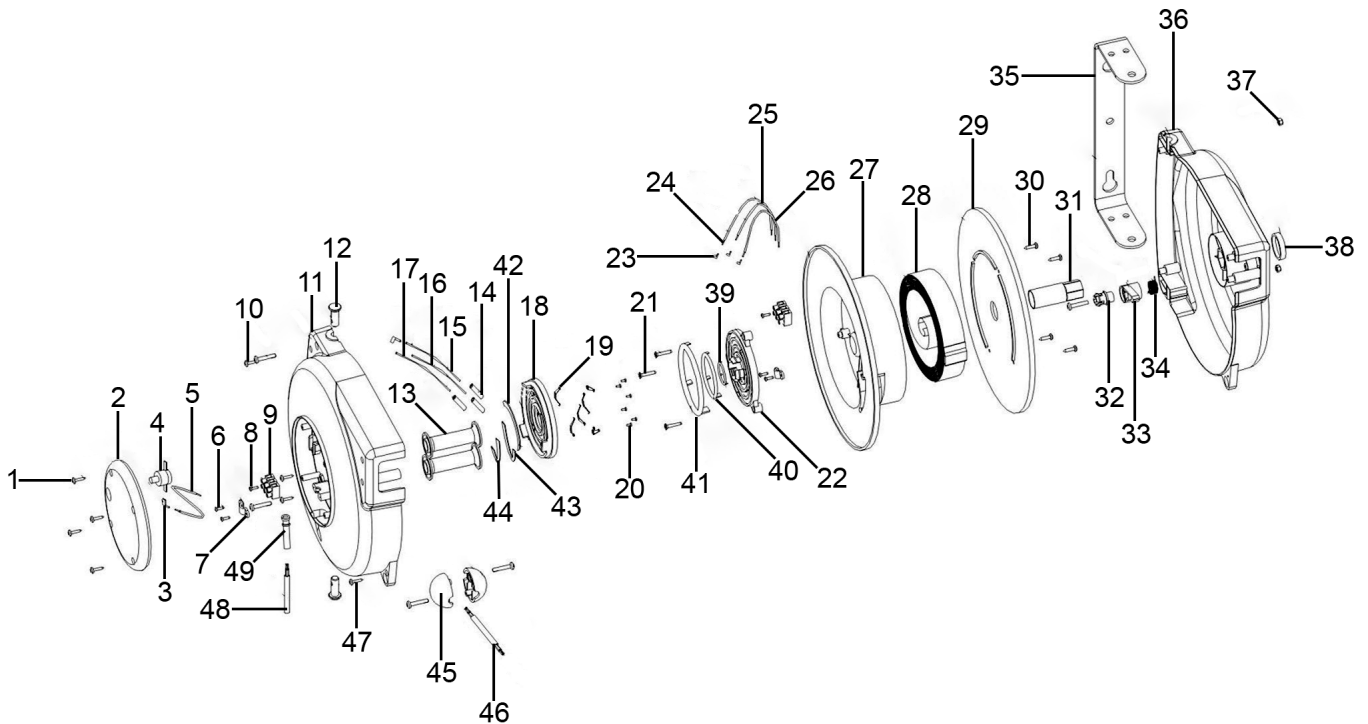


Parts Information:
Cable Reel System Retractable 15mtr 1 x 230V Socket
Model No: CRM15.V3



Item	Part No.	Description
1	CRM10.01	Screw 4.2 x 33.5mm
2	CRM15.02	Plastic Cover
3	CRM10.03	Terminal
4	CRM10.04	Thermal Cut-Out
5	CRM10.05	Wire (Live)
6	CRM10.06	Screw 2.9 x 9.5mm
7	CRM10.07	Cable Clamp
8	CRM10.08	Screw 2.9 x 14mm
9	CRM10.09	Terminal Block
10	CRM10.10	Screw M5 x 25mm
11	CRM15.11	Case, Left
12	CRM15.12	Wall Bracket Pins
13	CRM15.13	Roller
14	CRM10.14	Shrinkable Tube
15	CRM10.15	Connection (Live)

Item	Part No.	Description
16	CRM10.16	Connection (Earth)
17	CRM10.17	Connection (Neutral)
18	CRM10.18	Fixing Plate
19	CRM10.19	Touch Slide
20	CRM10.20	Copper Rivet
21	CRM10.21	Screw 4.2 x 22mm
22	CRM10.22	Movable Plate
23	CRM10.23	Terminal
24	CRM10.24	Wire (Live)
25	CRM10.25	Wire (Earth)
26	CRM10.26	Wire (Neutral)
27	CRM10.27	Drum
28	CRM15.28	Main Spring
29	CRM10.29	Drum Cap
30	CRM10.30	Screw 4.2 x 19mm

NOTE: It is our policy to continually improve products and as such we reserve the right to alter data, specifications and component parts without prior notice. There may be alternative versions of this product, please contact us should you require this information.

IMPORTANT: No liability is accepted for incorrect use of product. Spare parts must be fitted by a competent person

WARRANTY: Guarantee is 12 months from purchase date, proof of which will be required for any claim.



Parts Information:
**Cable Reel System Retractable 15mtr 1 x
230V Socket**
Model No: CRM15.V3

Item	Part No.	Description
31	CRM10.31	Axle
32	CRM15.32	Ratchet Cover
33	CRM15.33	Ratchet
34	CRM15.34	Spring
35	CRM15.35	Wall Bracket
36	CRM15.36	Case, Right
37	SN5.S	Steel Nut M5
38	CRM15.38	Plastic Cover
39	CRM10.39	Slip Ring (Small)
40	CRM10.40	Slip Ring (Medium)

Item	Part No.	Description
41	CRM10.41	Slip Ring (Large)
42	CRM10.42	Half Copper Ring (Large)
43	CRM10.43	Half Copper Ring (Medium)
44	CRM10.44	Half Copper Ring (Small)
45	CRM15.45	Stop Block
46	CRM10.46	Cable Inlet
47	CRM10.47	Screw 4.2 x 16mm
48	CRM10.48	Cable Outlet
49	CRM10.49	Sheath

NOTE: It is our policy to continually improve products and as such we reserve the right to alter data, specifications and component parts without prior notice. There may be alternative versions of this product, please contact us should you require this information.

IMPORTANT: No liability is accepted for incorrect use of product. Spare parts must be fitted by a competent person

WARRANTY: Guarantee is 12 months from purchase date, proof of which will be required for any claim.

Sealey Group, Kempson Way, Suffolk Business Park, Bury St Edmunds, Suffolk. IP32 7AR



01284 757500



01284 703534



sales@sealey.co.uk



www.sealey.co.uk