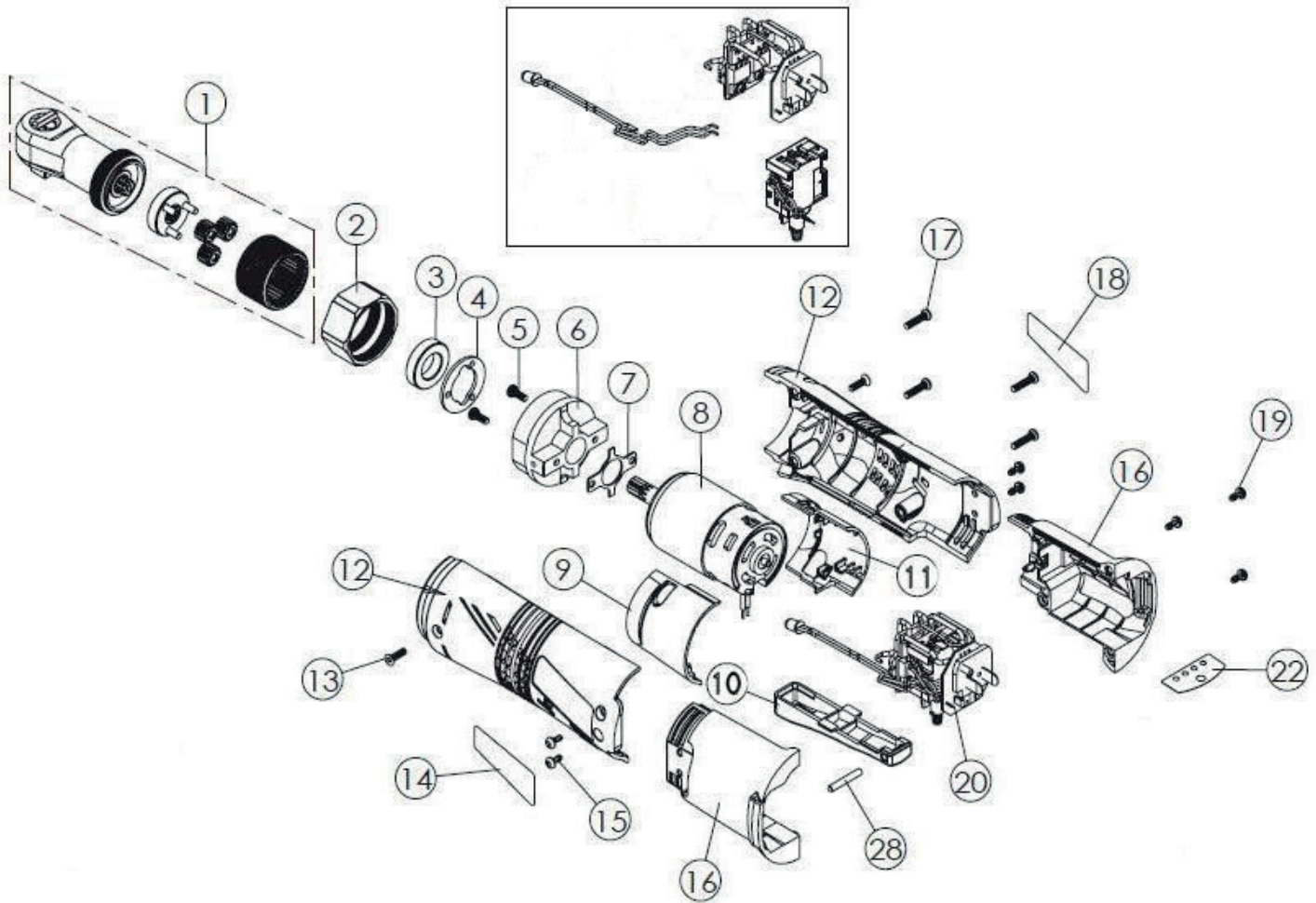


Parts Information:
Ratchet Wrench 3/8" Sq Drive 68Nm 14.4V
Li-ion 4-Pole Motor - Body Only
Model No: CP6012



Item	Part No.	Description
1	CP6002.01	Ratchet Head Ass'y
2	CP6002.02	Nut
3	CP6002.03	Bush
4	CP6002.04	Washer Disc With 3 Holes
5	CP6002.05	Screw
6	CP6002.06	Motor Block
7	CP6002.07	Washer/Gasket
8	CP6002.08	Motor Ass'y
9	CP6002.09	Insulation Ass'y
10	CP6002.10	Trigger
12	CP6002.11	Housing Ass'y
13	CP6002.12	Screw
14	CP6002.13	Housing Label (Left Side)
15	CP6002.14	RD Head S/T Screw M2.8 x 5 Black

Item	Part No.	Description
16	CP6002.15	Battery Housing Ass'y
17	CP6002.16	Screw
18	CP6002.17	Housing Label (Right Side)
19	CP6002.18	RD Head S/T Screw M2.8 x 12 Black
20	CP6002.20	PCB Ass'y
22	CP6002.22	Battery Indicator Label
28	CP6002.28	Pin
		Items Not Supplied - Not shown
--	CP60BP	Power Tool Battery 14.4V 2Ah Lithium-ion
--	CP6002.23	Battery Label
--	CP60MC	Battery Charger 14.4V Lithium-ion 40min
--	CP6002.25	Charger Label (Upper)
--	CP6002.26	Charger Label (Lower)
--	CP6001.23	Power Cord (2-Pin)

NOTE: It is our policy to continually improve products and as such we reserve the right to alter data, specifications and component parts without prior notice.

IMPORTANT: No liability is accepted for incorrect use of product. Spare parts must be fitted by a competent person

WARRANTY: Guarantee is 12 months from purchase date, proof of which will be required for any claim.