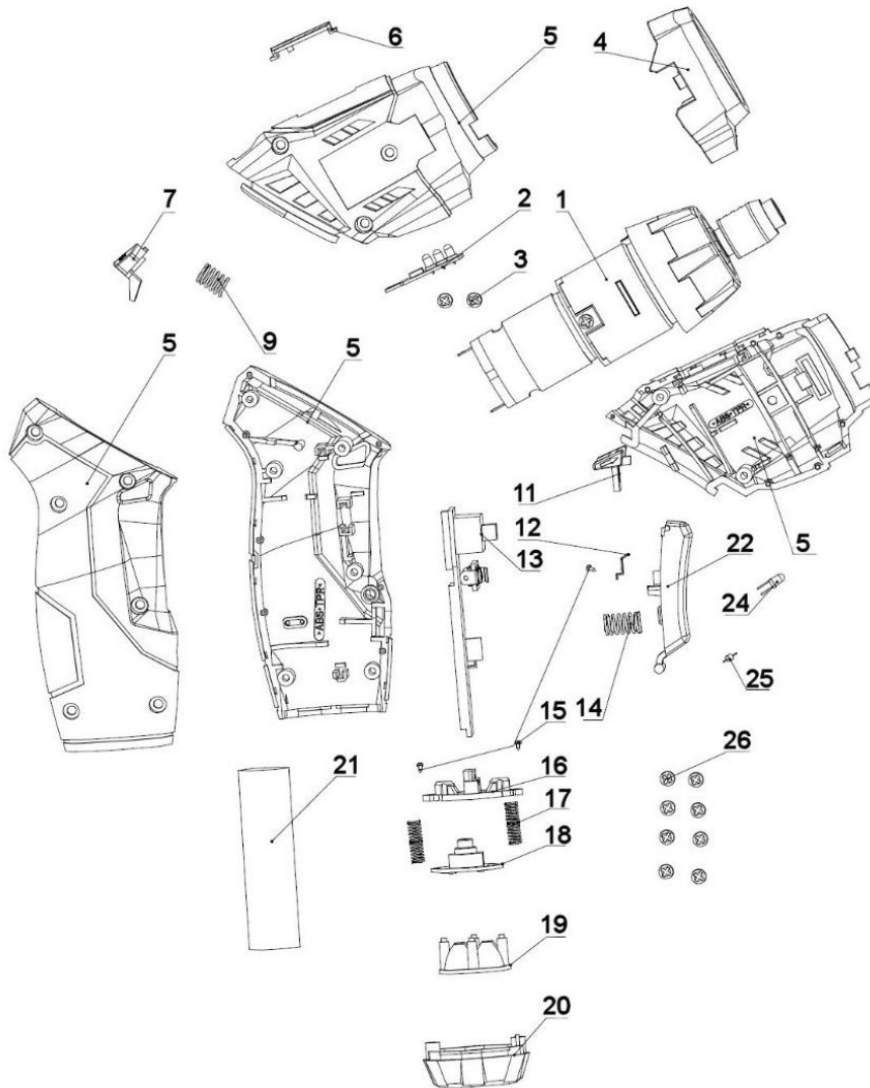


Parts Information:
Cordless Screwdriver Set 46pc 3.6V
Lithium-ion
Model No: CP36S.V2



Item	Part No.	Description
1	CP36S.V2-01	Gearbox Ass'y
2	CP36S.V2-02	Power Display
3	CP36S.V2-03	Screw st3 x 10
4	CP36S.V2-04	Front Cover
5	CP36S.V2-05	Housing Complete
6	CP36S.V2-06	Led Display Board Cover
7	CP36S.V2-07	Locking Knob
9	CP36S.V2-09	Spring Dia 7.5mm
11	CP36S.V2-11	Direction Piece
12	CP36S.V2-12	Plate for light Switch
13	CP36S.V2-13	Charging PCB c/w Switch & Plug
14	CP36S.V2-14	Spring Dia 8.1mm

Item	Part No.	Description
15	CP36S.V2-15	Screw (st2.5x6)
16	CP36S.V2-16	Lamp Holder
17	CP36S.V2-17	Lamp Holder Spring Dia 4mm
18	CP36S.V2-18	Pcb With Switch And Led's
19	CP36S.V2-19	Lamp Lens
20	CP36S.V2-20	Transparent Lampshade
21	CP36S.V2-21	Battery, 3.6v, 1.3ah (Li-Ion)(H:65 W:20)
22	CP36S.V2-22	Button For Press Switch
24	CP36S.V2-24	Led Light
25	CP36S.V2-25	Diode
26	CP36S.V2-26	Screw (st3x12)

NOTE: It is our policy to continually improve products and as such we reserve the right to alter data, specifications and component parts without prior notice. There may be alternative versions of this product, please contact us should you require this information.

IMPORTANT: No liability is accepted for incorrect use of product. Spare parts must be fitted by a competent person

WARRANTY: Guarantee is 12 months from purchase date, proof of which will be required for any claim.