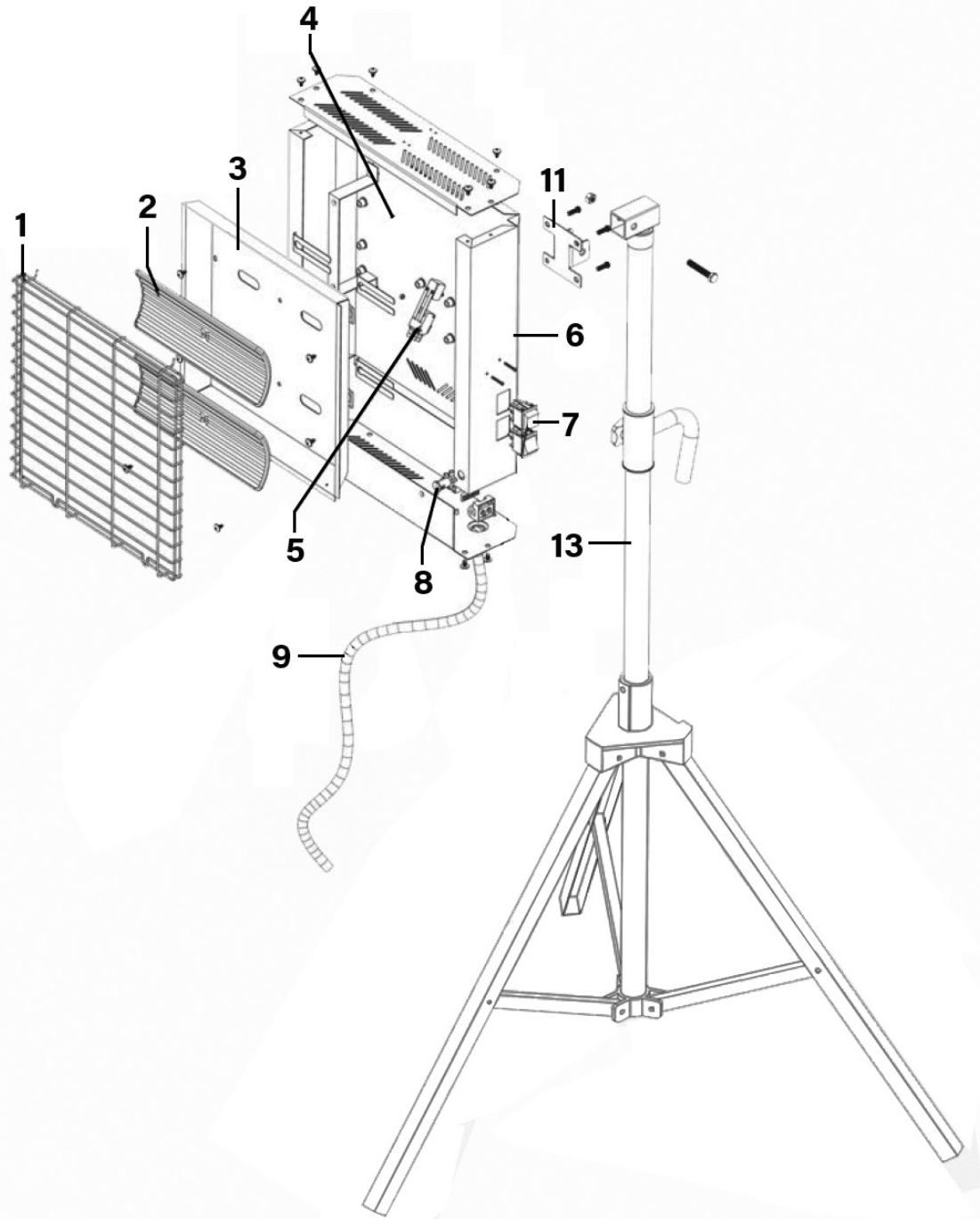




Parts Information:  
**Ceramic Heater with Telescopic Tripod  
 Stand 1.4/2.8kW 110V  
 Model No: CH28110VS**



Item	Part No.	Description
1	CH28110VS.01	Metal Front Grille
2	CH28110VS.02	Heating Element 110v
3	CH28110VS.03	Reflector
4	CH28110VS.04	Housing
5	CH28110VS.05	Safety Tilt Switch
6	CH28110V.06	Frame

Item	Part No.	Description
7	CH28110VS.07	Switch, Rocker, Illuminated(Red) - 16A/250V
8	CH28110VS.08	Indicator Lamp
9	MC3CX1.5R	Mains Cable Blk, 3 Core (Rubber) 1.5mm2
11	CH28110VS.11	Fixed Bracket
13	CH28110VS.13	Tripod
--	CH28110VS.12	Upright Shaft (C/w Fixed Bracket) (Not Shown)

**NOTE:** It is our policy to continually improve products and as such we reserve the right to alter data, specifications and component parts without prior notice. There may be alternative versions of this product, please contact us should you require this information.

**IMPORTANT:** No liability is accepted for incorrect use of product. Spare parts must be fitted by a competent person

**WARRANTY:** Guarantee is 12 months from purchase date, proof of which will be required for any claim.

**Sealey Group**, Kempson Way, Suffolk Business Park, Bury St Edmunds, Suffolk. IP32 7AR



01284 757500



01284 703534



sales@sealey.co.uk



www.sealey.co.uk