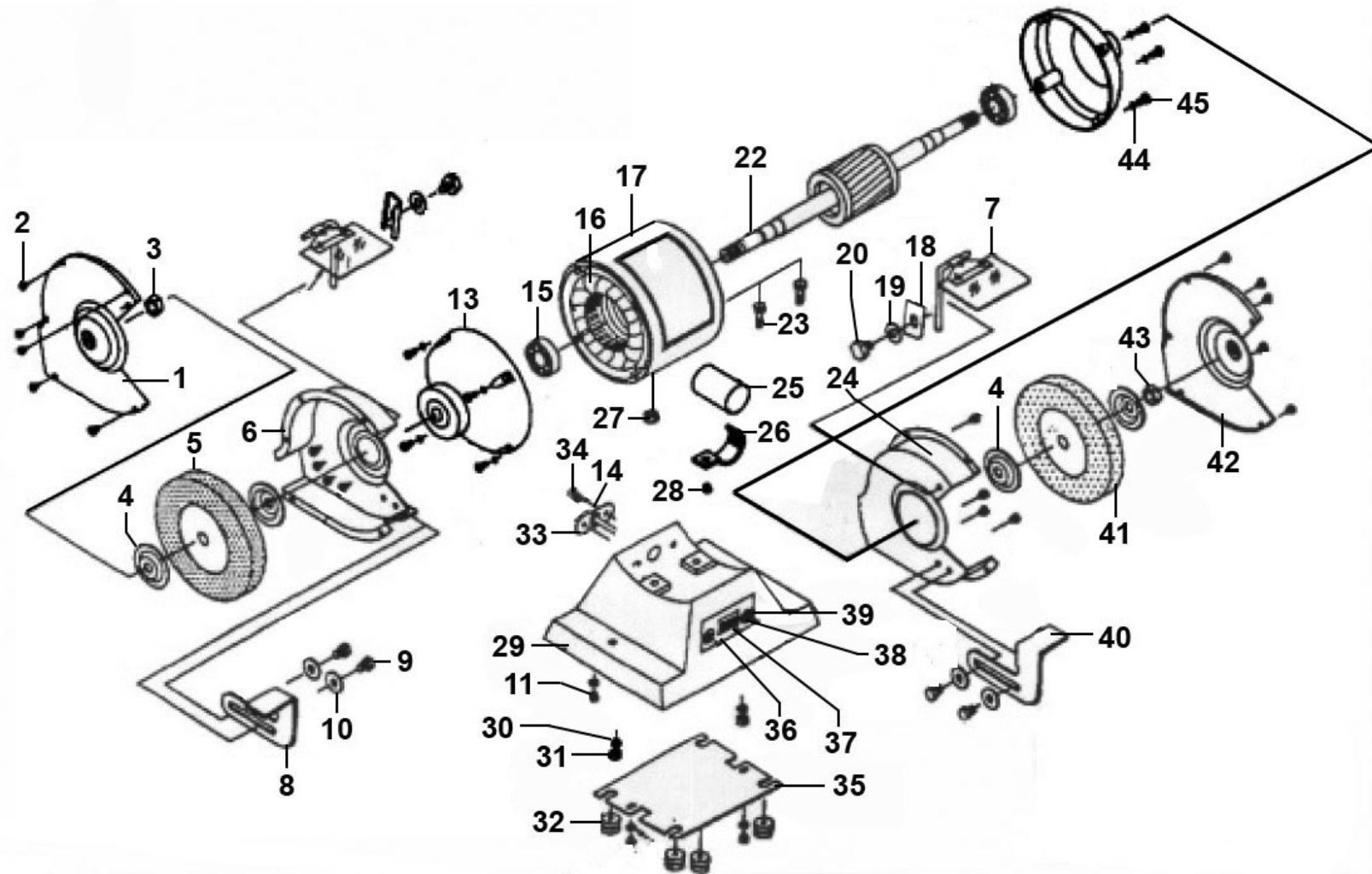




Parts Information:
Bench Grinder Ø150mm 370W/230V
Model No: BG150XL/96



NOTE: It is our policy to continually improve products and as such we reserve the right to alter data, specifications and component parts without prior notice.

There may be alternative versions of this product, please contact us should you require this information.

IMPORTANT: No liability is accepted for incorrect use of product. Spare parts must be fitted by a competent person

WARRANTY: Guarantee is 12 months from purchase date, proof of which will be required for any claim.

Sealey Group, Kempson Way, Suffolk Business Park, Bury St Edmunds, Suffolk. IP32 7AR



01284 757500



01284 703534



sales@sealey.co.uk



www.sealey.co.uk



Parts Information:
Bench Grinder Ø150mm 370W/230V
Model No: BG150XL/96

Item	Part No.	Description
1	BG150XL/96-01	Wheel Guard, Left
2	MSP56.S	Machine Screw Pan Head Phillips M5 x 6mm
3	BG150XL/96-03	Left Hand Thread Nut M12 Zinc
4	BG150XL/96-04	Clamp, Wheel
5	BG150/16	Grinding Stone Ø150 x 20mm 32(13)mm Bore A36Q Coarse
6	BG150XL/96-06	Cover, Left Inner
7	BG150XL/96-07	Eye Shield Assembly (Including Bracket)
8	BG150XL/96-08	Tool Rest, Left
9	CBN616.S	Coach Bolt M6 x 16mm
10	RW619.S	Washer M6 X 19 Repair Washer
11	MSP510.SB	Machine Screw Pan Head Phillips M5 x 10mm Black
13	BG150XL/96-13	Flange
14	SM21/10	Cable Grip
15	B/6202ZZ	Bearing 6202zz
16	BG150XL/96-16	Stator
17	BG150XL/96-17	Body
18	BG150XL/96-18	Clamp
19	RW619.S	Repair Washer M6 X 19 Zinc
20	CBN614.S	Coach Bolt M6 x 14mm
22	BG150XL/96-22	Rotor Set
23	SS625.S	Hex Head Set Screw M6 X 25 Zinc
24	BG150XL/96-24	Cover, Inner, Right
25	BG150XD/99-08	Capacitor 5uf wv400ac 50/60hz 55x35

Item	Part No.	Description
26	BG150XL/96-26	Clamp, Capacitor
27	BG150XL/96-32	Ring, Rubber
28	CBN616.S	Coach Bolt M6 x 16mm
29	BG150XL/96-29	Base
30	FWM6.S	Flat Washer M6 Zinc
31	SN6.S	Steel Nut M6 Zinc
32	BG150XL/96-32	Rubber Foot
33	BG150XL/96-33	Clamp, cable
34	MSP58.S	Machine Screw Pan Head Phillips M5 X 8mm
35	BG150XL/96-35	Baseboard
36	BG200XL/A-24	Fixing Plate For Rocker Switch
37	BG150XD/99-04	Switch, Rocker (Red) On/Off - c/w Switch Plate
38	MSP310.S	Machine Screw Pan Head Phillips M3 x 10mm
39	FWM3.S	Flat Washer M3 Zinc
40	BG150XL/96-40	Tool Rest, Right
41	BG150/15	Grinding Stone Ø150 x 20mm 32(13)mm Bore A60P Fine
42	BG150XL/96-42	Wheel Guard, Right
43	SN12.S	Steel Nut M12 Zinc
44	FWM5.S	Flat Washer M5 Zinc
45	MSP516.S	Machine Screw Pan Head Phillips M5 x 16mm
--	BG150XL/96-S	Spacer For Grinding Wheel (Not Shown)
--	BG150XL/96-TF	Tool Rest Fixing Complete (Not Shown)
--	BG150XL/96-7L	Shield Set, Eye (I-Bar Type) (Not Shown)

NOTE: It is our policy to continually improve products and as such we reserve the right to alter data, specifications and component parts without prior notice. There may be alternative versions of this product, please contact us should you require this information.

IMPORTANT: No liability is accepted for incorrect use of product. Spare parts must be fitted by a competent person

WARRANTY: Guarantee is 12 months from purchase date, proof of which will be required for any claim.

Sealey Group, Kempson Way, Suffolk Business Park, Bury St Edmunds, Suffolk. IP32 7AR



01284 757500



01284 703534



sales@sealey.co.uk



www.sealey.co.uk