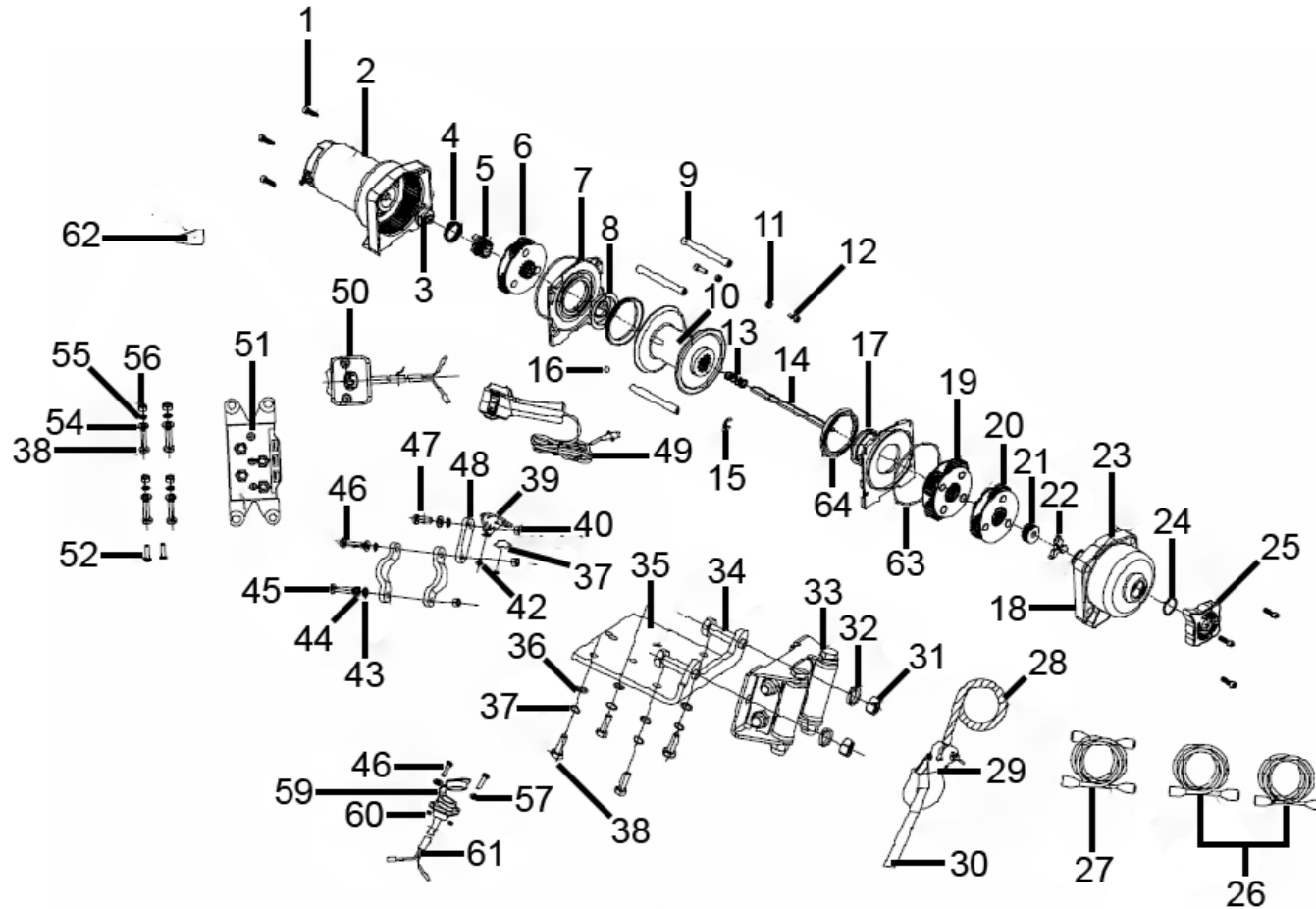




Parts Information:
ATV/Quad Recovery Winch 1135kg (2500lb) Line Pull 12V
Model No: ATV1135



NOTE: It is our policy to continually improve products and as such we reserve the right to alter data, specifications and component parts without prior notice.

There may be alternative versions of this product, please contact us should you require this information.

IMPORTANT: No liability is accepted for incorrect use of product. Spare parts must be fitted by a competent person

WARRANTY: Guarantee is 12 months from purchase date, proof of which will be required for any claim.

Sealey Group, Kempson Way, Suffolk Business Park, Bury St Edmunds, Suffolk. IP32 7AR



01284 757500



01284 703534



sales@sealey.co.uk



www.sealey.co.uk



Parts Information:
ATV/Quad Recovery Winch 1135kg (2500lb)
Line Pull 12V
Model No: ATV1135

Item	Part No.	Description
1	SCB520.S	Socket Cap Bolt M5 x 20mm
2	ATV1135.02	Motor Assembly
3	ATV1135.03	Coupling
4	ATV1135.04	Spring
5	ATV1135.05	1st Stage Sun Gear
6	ATV1135.06	1st Stage Planetary Gear Assembly
7	ATV1135.07	Drum Mounting Plate
8	ATV1135.08	Bushing
9	ATV1135.09	Tie Bar
10	ATV1135.10	Drum
11	NLN5.S	Nyloc Nut M5
12	SCB514.S	Socket Cap Bolt M5 x 14mm
13	ATV1135.13	Pressure Spring
14	ATV1135.14	Hexagon Shaft
15	ATV2040.23	E-Clip
16	ATV1135.16	Steel Ball
17	ATV1135.17	Bushing
18	3015CXD.11	External Circlip
19	ATV1135.19	3rd Stage Planetary Gear Assembly
20	ATV1135.20	2nd Stage Planetary Gear Assembly
21	ATV1135.21	2nd Stage Sun Gear
22	ATV1135.22	Clutch Slider
23	ATV1135.23	Gear Housing
24	SA0615KIT.08	O-Ring
25	ATV1135.25	Spool Handle
26	ATV1135.26	Motor lead (Yellow)
27	ATV1135.27	Power Lead (Red)
28	ATV1135.WR	Wire Rope
29	WH.01	Winch Hook 1/4"
30	ATV1135.30	Hand Saver
31	NLN10.S	Nyloc Nut M10
32	SWM10.S	Spring Washer M10

Item	Part No.	Description
33	ATV1135.33	Roller Fairlead
34	CBN1020.S	Coach Bolt M10 x 20mm
35	ATV1135.35	Mounting Plate
36	SN8.S	Steel Nut M8
37	FWM8.S	Flat Washer M8
38	SS625.S	Hex Head Set Screw M6 X 25
39	ATV1135.39	Fixed Plate (L)
40	NLN5.S	Nyloc Nut M5
42	ATV1135.42	Pan Head Screw
43	ATV1135.43	Fixed Plate Grip
44	FWM5.SB	Flat Washer M5 Black
45	JSW.0001	M5 EXT Tooth Washer
46	SCB525.S	Socket Cap Bolt M5 x 25mm
47	SCB518.S	Socket Cap Bolt M5 x 18mm
48	ATV1135.48	Fixed Plate
49	ATV1135.49	Remote Control
50	ATV1135.50	Handle Bar Switch, Rocker
51	ATV1135.51	Solenoid
52	SS620.S	Hex Head Set Screw M6 X 20
54	FWM6.SB	Flat Washer M6 Black
55	SWM6.S	Spring Washer M6
56	NLN6.S	Nyloc Nut M6
57	FWM5.SB	Flat Washer M5 Black
59	ATV1135.59	Waterproof Cover
60	SN5.SB	Steel Nut M5 Black
61	ATV1135.61	Connector Harness (F)
62	ATV2040.73	Rubber Cover
63	ATV1135.63	O-Ring
64	ATV1135.64	Seal
--	ATV1135.26A	Motor Lead (Blue) (Not Shown)
--	ATV1135.27A	Power Lead (Black) (Not Shown)
--	ATV1135.DR	Dyneema Rope (Not Shown)

NOTE: It is our policy to continually improve products and as such we reserve the right to alter data, specifications and component parts without prior notice. There may be alternative versions of this product, please contact us should you require this information.

IMPORTANT: No liability is accepted for incorrect use of product. Spare parts must be fitted by a competent person

WARRANTY: Guarantee is 12 months from purchase date, proof of which will be required for any claim.

Sealey Group, Kempson Way, Suffolk Business Park, Bury St Edmunds, Suffolk. IP32 7AR



01284 757500



01284 703534



sales@sealey.co.uk



www.sealey.co.uk