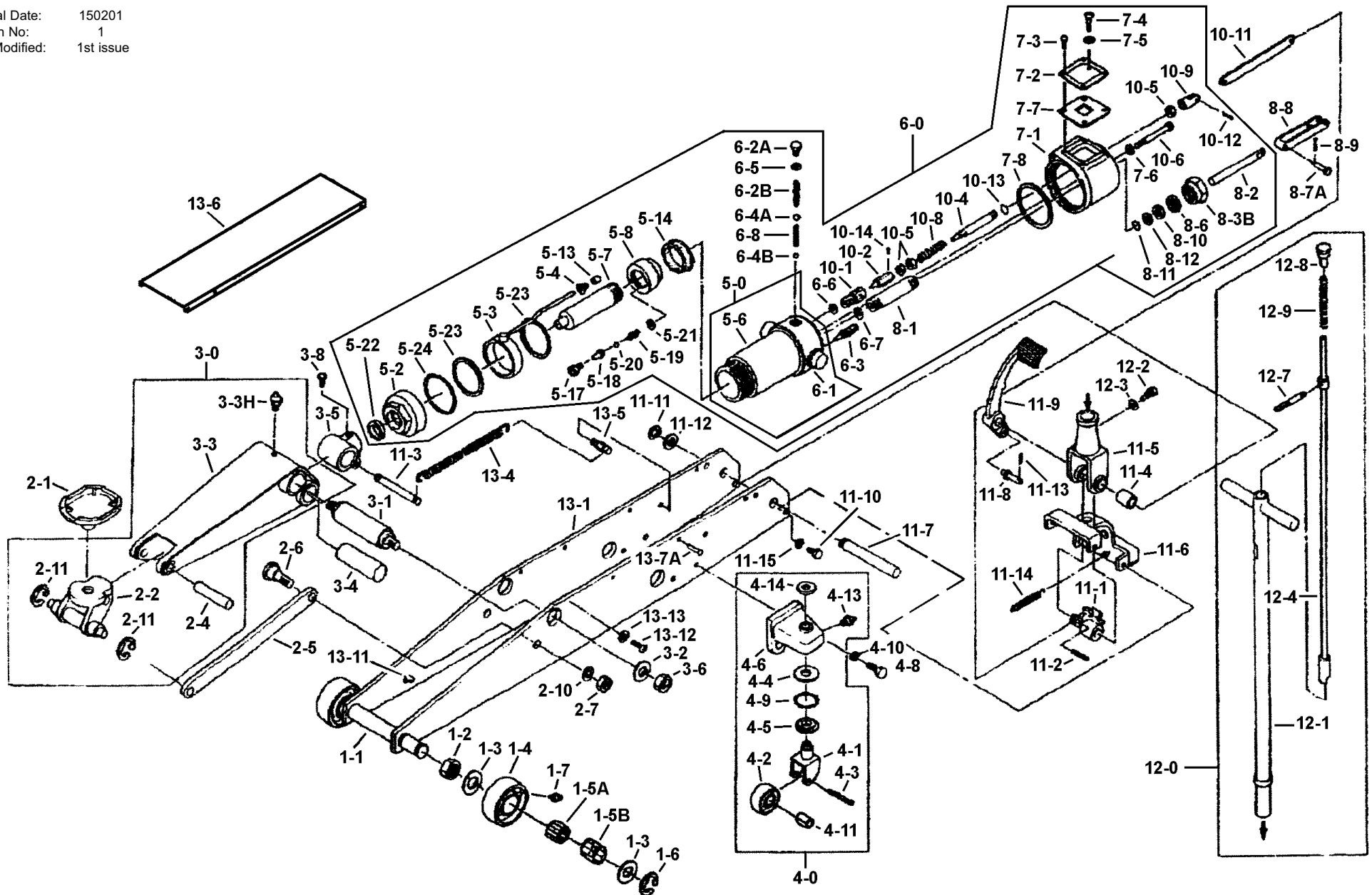


Original Date: 150201  
Version No: 1  
Date Modified: 1st issue



Note: '10QJ/X-Y' part numbers apply to both models, except for item 6-0.

Item	Part No.	Description
1-1	10QJ/1-1	Front Wheel Shaft
1-2	10QJ/1-2	Front Wheel Nut
1-3	10QJ/1-3	Washer
1-4	10QJ/1-4	Front Wheel
1-5A	10QJ/1-5A	Roller
1-5B	10QJ/1-5B	Roller Guide
1-6	10QJ/1-6	E-ring
1-7	10QJ/1-7	Grease Nipple
2-1	10QJ/2-1	Saddle
2-2	10QJ/2-2	Saddle Base
2-4	10QJ/2-4	Arm Pin A
2-5	10QJ/2-5	Link Rod
2-6	10QJ/2-6	Link Rod Pin B
2-7	10QJ/2-7	Nut
2-10	10QJ/2-10	Spring Washer
2-11	10QJ/2-11	E-ring
3-0	10QJ/3-0	Arm Assembly
3-1	10QJ/3-1	Arm Pin
3-2	10QJ/3-2	Washer
3-3	10QJ/3-3	Arm
3-3H	10QJ/3-3H	Grease Nipple
3-4	10QJ/3-4	Piston Pin
3-5	10QJ/3-5	Piston Connecting Joint
3-6	10QJ/3-6	Nut
3-8	10QJ/3-8	Bolt
4-0	10QJ/4-0	Castor Assembly
4-1	10QJ/4-1	Castor Fork
4-2	10QJ/4-2	Rear Wheel
4-3	10QJ/4-3	Rear Wheel Shaft
4-4	10QJ/4-4	Upper Ring Race
4-5	10QJ/4-5	Lower Ring Race
4-6	10QJ/4-6	Castor Bracket
4-8	10QJ/4-8	Bolt
4-9	10QJ/4-9	Steel Ball

Item	Part No.	Description
4-10	10QJ/4-10	Spring Washer
4-11	10QJ/4-11	Bush
4-13	10QJ/4-13	Grease Nipple
4-14	10QJ/4-14	Cap
5-0	10QJ/5-0	Oil Box Assembly
5-2	10QJ/5-2	Tank Nut
5-3	10QJ/5-3	Ring
5-4	10QJ/5-4	Pipe Nipple
5-6	10QJ/5-6	Cylinder
5-7	10QJ/5-7	Piston Rod
5-8	10QJ/5-8	Piston Packing Retainer
5-13	10QJ/5-13	Cork Packing *
5-14	10QJ/5-14	U-type Packing *
5-17	10QJ/5-17	By-pass Valve Housing
5-18	10QJ/5-18	By-pass Rod
5-19	10QJ/5-19	By-pass Spring
5-20	10QJ/5-20	Steel Ball *
5-21	10QJ/5-21	Copper Packing *
5-22	10QJ/5-22	Oil Seal
5-23	10QJ/5-23	Nylon Packing *
5-24	10QJ/5-24	O-ring
6-0	7001/6-0	Power Unit Assembly
6-0	10QJ/6-0	Power Unit Assembly
6-1	10QJ/6-1	Oil Box
6-2A	10QJ/6-2A	Bolt
6-2B	10QJ/6-2B	Separator
6-3	10QJ/6-3	Oil Strainer
6-4A	10QJ/6-4A	Steel Ball *
6-4B	10QJ/6-4B	Steel Ball *
6-5	10QJ/6-5	Copper Packing *
6-6	10QJ/6-6	Copper Packing *
6-7	10QJ/6-7	Copper Packing *
6-8	10QJ/6-8	Separator
7-1	10QJ/7-1	Oil Tank

Item	Part No.	Description
7-2	10QJ/7-2	Oil Tank Cover
7-3	10QJ/7-3	Bolt
7-4	10QJ/7-4	Screw
7-5	10QJ/7-5	Packing
7-6	10QJ/7-6	Fibre Packing
7-7	10QJ/7-7	Packing *
7-8	10QJ/7-8	Rubber Packing *
8-1	10QJ/8-1	Pump Cylinder
8-2	10QJ/8-2	Pump Plunger
8-3B	10QJ/8-3B	Lock Nut
8-6	10QJ/8-6	Rubber Packing *
8-7A	10QJ/8-7A	Plunger Connecting Pin
8-8	10QJ/8-8	Connecting Bar
8-9	10QJ/8-9	Cotter Pin
8-10	10QJ/8-10	Oil Seal *
8-11	10QJ/8-11	O-ring *
8-12	10QJ/8-12	Back-up Ring *
10-1	10QJ/10-1	Release Valve Housing
10-2	10QJ/10-2	Release Valve
10-4	10QJ/10-4	Release Valve Con. Rod
10-5	10QJ/10-5	Lock Nut
10-6	10QJ/10-6	Bolt
10-8	10QJ/10-8	Spring
10-9	10QJ/10-9	Fork
10-11	10QJ/10-11	Release Valve Con. Link
10-12	10QJ/10-12	Cotter Pin
10-13	10QJ/10-13	O-ring *
10-14	10QJ/10-14	Retaining Pin
11-1	10QJ/11-1	Cam Step
11-2	10QJ/11-2	Spring Pin
11-3	10QJ/11-3	Spring Hanger, Rear
11-4	10QJ/11-4	Collar
11-5	10QJ/11-5	Handle Fork
11-6	10QJ/11-6	Handle Fork Bracket

Item	Part No.	Description
11-7	10QJ/11-7	Handle Shaft
11-8	10QJ/11-8	Foot Pedal Pin
11-9	10QJ/11-9	Foot Pedal
11-10	10QJ/11-10	Bolt
11-11	10QJ/11-11	Snap Ring
11-12	10QJ/11-12	Washer
11-13	10QJ/11-13	Cotter Pin
11-14	10QJ/11-14	Spring
11-15	10QJ/11-15	Spring Washer
12-0	10QJ/12-0	Handle Assembly
12-1	10QJ/12-1	Handle
12-2	10QJ/12-2	Handle Set Screw
12-3	10QJ/12-3	Spring Washer
12-4	10QJ/12-4	Valve Control Rod
12-7	10QJ/12-7	Valve Control Lever
12-8	10QJ/12-8	Handle Cap
12-9	10QJ/12-9	Spring
13-1	10QJ/13-1	Frame
13-4	10QJ/13-4	Spring
13-5	10QJ/13-5	Spring Hanger, Rear
13-6	10QJ/13-6	Cover
13-7A	10QJ/13-7A	Rivet
13-11	10QJ/13-11	Arm Stopper
13-12	10QJ/13-12	Screw
13-13	10QJ/13-13	Washer
*	10QJ/RK	Repair Kit - consisting of items marked *