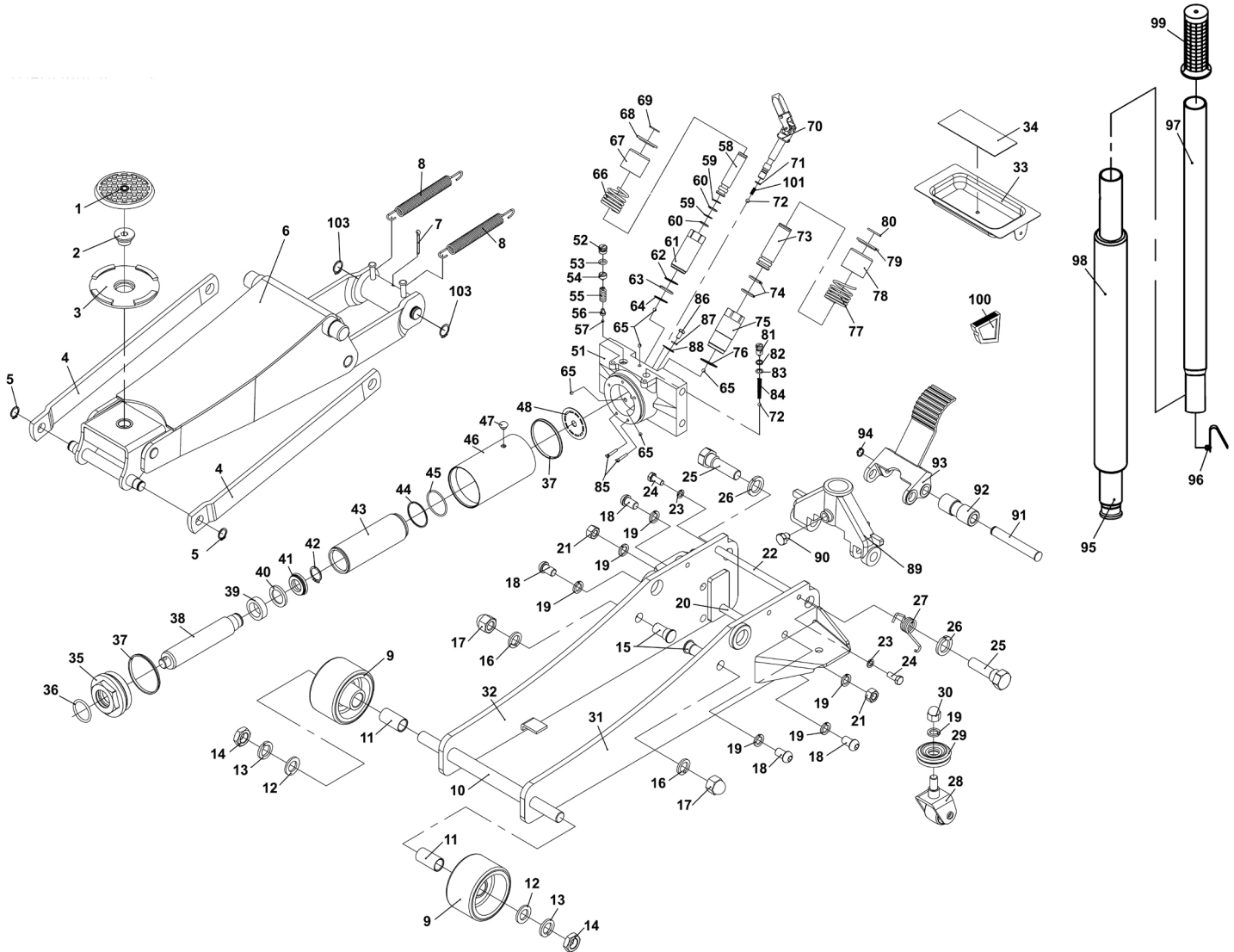




Parts Information:  
**Viking Tyre Bay Trolley Jack 4tonne Low Entry with Rocket Lift**  
**Model No: 4040TB.V2**



Item	Part No.	Description
1	JP17	Safety Rubber Jack Pad - Type B
2	4040TB.02	Saddle Bolt
3	4040TB.03	Saddle
4	4040TB.04	Radius Link
5	4040TB.05	Snap Ring 16mm
6	4040TB.06	Lift Arm Assembly
7	4040TB.07	Cotter Pin
8	4040TB.08	Return Spring
9	4040TB.09	Front Wheel
10	4040TB.10	Front Axle
11	4040TB.11	Front Wheel Bush
12	FWM18.S	Flat Washer M18 Zinc

Item	Part No.	Description
13	SWM18.S	Spring Washer M18 Zinc
14	SN18.S	Steel Nut M18 Zinc
15	4040TB.15	Radius Link Stud
16	SWM16.S	Spring Washer M16 Zinc
17	SN16.SD	Steel Nut M16 Domed Zinc
18	BHSS1225.S	Button Head Socket Screw M12 X 25 Zinc
19	SWM12.S	Spring Washer M12 Zinc
20	4040TB.20	Frame Tie Rod
21	NLN12.S	Nyloc Nut M12 Zinc
22	4040TB.22	Frame Tie Rod
23	SWM8.S	Spring Washer M8 Zinc
24	SS820.S	Hex Head Set Screw M8 X 20 Zinc

**NOTE:** It is our policy to continually improve products and as such we reserve the right to alter data, specifications and component parts without prior notice. There may be alternative versions of this product, please contact us should you require this information.

**IMPORTANT:** No liability is accepted for incorrect use of product. Spare parts must be fitted by a competent person

**WARRANTY:** Guarantee is 12 months from purchase date, proof of which will be required for any claim.

Sealey Group, Kempson Way, Suffolk Business Park, Bury St Edmunds, Suffolk. IP32 7AR



01284 757500



01284 703534



sales@sealey.co.uk



www.sealey.co.uk



Parts Information:  
**Viking Tyre Bay Trolley Jack 4tonne Low  
 Entry with Rocket Lift**  
**Model No: 4040TB.V2**

Item	Part No.	Description
25	4040TB.25	Handle Sleeve Bolt
26	SWM20.S	Spring Washer M20 Zinc
27	4040TB.27	Torsion Spring
28	4040TB.28	Rear Castor Assembly
29	4040TB.29	Roller Bearing Assembly
30	SN12.SD	Steel Nut M12 Domed Zinc
31	4040TB.31	Frame, Left Side
32	4040TB.32	Frame, Right Side
33	4040TB.33	Tool Tray (c/w Part 34)
34	4040TB.34	Rubber Pad (Magnetic)
35	4040TB.35	Top Nut
36	4040TB.36	O-Ring (Ø34.6 × Ø3.5)
37	4040TB.37	Wedge Ring
38	4040TB.38	Ram Plunger
39	4040TB.39	Bushing Cover
40	4040TB.40	Back-up Washer
41	4040TB.41	U-Cup Seal
42	4040TB.42	Snap Ring 30mm
43	4040TB.43	Cylinder
44	4040TB.44	Back-up Washer
45	4040TB.45	O-Ring (Ø49.5 × Ø2.4)
46	4040TB.46	Reservoir
47	4040TB.47	Oil Seal
48	4040TB.48	Disc (Ø53 x Ø10 x 1)
51	4040TB.51	Base
52	4040TB.52	Guard Screw
53	4040TB.53	O-Ring (13 x 2.4)
54	4040TB.54	Safety Valve Screw
55	4040TB.55	Safety Valve Spring
56	4040TB.56	Ball Seat Valve
57	SB-4.0	Steel Ball 4.0mm
58	4040TB.58	Pump Piston
59	4040TB.59	Back-up Washer
60	4040TB.60	O-Ring (Ø10.2 × 2.65)
61	4040TB.61	Pump (A)
62	4040TB.62	Back-up Washer (for Pump 'A')
63	4040TB.63	O-Ring (Ø21.5 × 2.4)
64	4040TB.64	Copper Washer (Ø25 × Ø10-0.7)
65	SB-5.0	Steel Ball 5.0mm
66	4040TB.66	Pump Core Spring (A)
67	4040TB.67	Spring Sleeve (A)

Item	Part No.	Description
68	4040TB.68	Spring Stop Plate (A)
69	4040TB.69	Spring Stop Plate Ring (A)
70	4040TB.70	Release Valve Assembly
71	4040TB.71	O-Ring (Ø8×Ø1.8)
72	SB-6.0	Steel Ball 6.0mm
73	4040TB.73	Pump Piston (B)
74	4040TB.74	O-Ring (Ø17.2 × Ø2.65)
75	4040TB.75	Pump (B)
76	4040TB.76	Copper Washer (Ø28 × Ø14-0.7)
77	4040TB.77	Pump Core Spring (B)
78	4040TB.78	Spring Sleeve (B)
79	4040TB.79	Spring Stop Plate (B)
80	4040TB.80	Spring Stop Plate Ring (B)
81	4040TB.81	Valve Bolt (M10 x 1-16)
82	4040TB.82	Back-up Washer
83	4040TB.83	O-Ring (Ø7.7 × Ø1.9)
84	4040TB.84	Spring
85	4040TB.85	Filter
86	SS612.S	Hex Head Set Screw M6 X 12 Zinc
87	SWM6.S	Spring Washer M6 Zinc
88	4040TB.88	Flat Washer (26 × 17 × T3)
89	4040TB.89	Handle Socket
90	4040TB.90	Handle Socket Bolt (M12 x 13)
91	4040TB.91	Handle Socket Pin
92	4040TB.92	Handle Socket Roller
93	4040TB.93	Foot Pedal
94	4040TB.94	External Circlip 14.0mm ID.
95	4040TB.95	Lower Handle (c/w Part 98)
96	2001LERE.V2-92	Handle Lock Button
97	4040TB.97	Upper Handle (c/w Part 99)
98	4040TB.98	Handle Sleeve
99	4040TB.99	Handle Grip
100	4040TB.100	Handle Locking Block
101	SQ0344	Release Valve Spring
102	SQ0422	Lifting Arm Rod
103	3000CXD.V6-07	Snap Ring 19mm
--	4040TB.HU	Hydraulic Unit for 4040TB (not shown)
--	4040TB.RK	Repair Kit for 4040TB (not shown)

**NOTE:** It is our policy to continually improve products and as such we reserve the right to alter data, specifications and component parts without prior notice. There may be alternative versions of this product, please contact us should you require this information.

**IMPORTANT:** No liability is accepted for incorrect use of product. Spare parts must be fitted by a competent person

**WARRANTY:** Guarantee is 12 months from purchase date, proof of which will be required for any claim.

**Sealey Group**, Kempson Way, Suffolk Business Park, Bury St Edmunds, Suffolk. IP32 7AR



01284 757500



01284 703534



sales@sealey.co.uk



www.sealey.co.uk