

Item	Part No.	Description
1	3015CXD.01	External Circlip
2	FWM18.S	Flat Washer M18
3	3015CXD.03	Wheel, Front Fixed
4	3015CXD.04	Side Member (Left)
5	3015CXD.05	Connecting Lever
6	3015CXD.06	Front Wheel Shaft

Item	Part No.	Description
7	3015CXD.07	Side Member (Right)
8	3015CXD.08	Lift Arm
9	3015CXD.09	Retaining Ring 16mm
10	3015CXD.10	Saddle
11	3015CXD.11	External Circlip
12	3015CXD.12	Return Spring

**NOTE:** It is our policy to continually improve products and as such we reserve the right to alter data, specifications and component parts without prior notice. There may be alternative versions of this product, please contact us should you require this information.

**IMPORTANT:** No liability is accepted for incorrect use of product. Spare parts must be fitted by a competent person

**WARRANTY:** Guarantee is 12 months from purchase date, proof of which will be required for any claim.



Parts Information:  
**Trolley Jack 3tonne Super Rocket Lift**  
**Model No: 3015CXD**

Item	Part No.	Description
13	2050CX.V2-25	Cotter Pin 4 x 45
14	3015CXD.14	Connecting Block
15	3015CXD.15	Cross Bar
16	3015CXD.16	Spring Washer 8mm
17	3015CXD.17	Hex Head Bolt M8x15
18	3015CXD.18	Spring washer 16mm
19	SN16.S	Steel Nut M16
20	3015CXD.20	Connecting Bolt
21	3015CXD.21	Pressure Retaining Ring
22	3015CXD.22	Screw CSK M5x10
23	3015CXD.23	Handle Socket Shaft
24	3015CXD.24	Safety Cap
25	3015CXD.25	Cover Plate
26	3015CXD.26	Hydraulic Pump
27	3015CXD.27	Handle Socket Screw M12

Item	Part No.	Description
28	3015CXD.28	Handle Socket
29	3015CXD.29	Idler Wheel
30	3015CXD.30	Cotter Pin 3.8 x 45mm
31	3015CXD.31	Idler Puller Pin
32	3015CXD.32	Spring Washer 18mm
33	3015CXD.33	Hand Pressure Bolt
34	3015CXD.34	Wheel,swivel castor (16mm Thread)
35	3015CXD.35	Hex Head Screw M10x20
36	SWM10.SB	Spring Washer M10 Black
37	3015CXD.37	Lower Lower Handle
38	2001LE.42	Upper Handle
39	SS635.S	Hex Head Set Screw M6 X 35 Zinc
40	3015CXD.40	Handle grip
--	3015CXD.34A	Wheel, Swivel Castor (12mm Thread)(Not Shown)

**NOTE:** It is our policy to continually improve products and as such we reserve the right to alter data, specifications and component parts without prior notice. There may be alternative versions of this product, please contact us should you require this information.

**IMPORTANT:** No liability is accepted for incorrect use of product. Spare parts must be fitted by a competent person

**WARRANTY:** Guarantee is 12 months from purchase date, proof of which will be required for any claim.

**Sealey Group**, Kempson Way, Suffolk Business Park, Bury St Edmunds, Suffolk. IP32 7AR



01284 757500



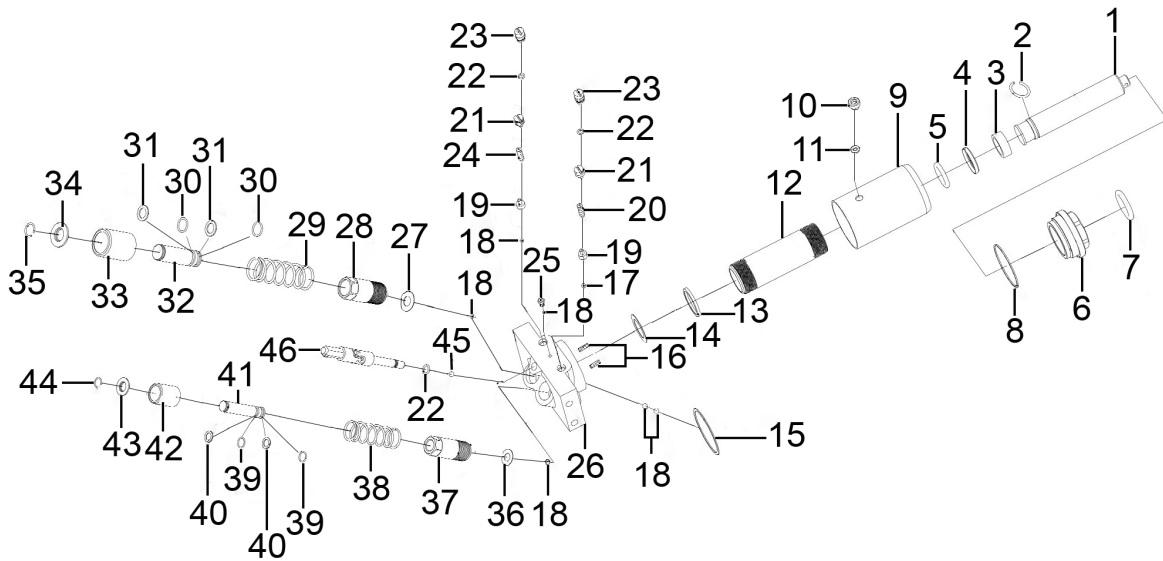
01284 703534



sales@sealey.co.uk



www.sealey.co.uk



Item	Part No.	Description
1	3015CXD.P01	Piston
2	3015CXD.P02	Snap Ring
3	3015CXD.P03	Pressure Ring
4	3015CXD.P04	Bowl Washer
5	3015CXD.P05	O-Ring
6	3015CXD.P06	Top Cap
7	RE91/10.07	O-Ring
8	3015CXD.P08	Nylon Ring
9	3015CXD.P09	Reservoir
10	3015CXD.P10	Oil Filler Screw
11	WK025.V2-31	O-Ring
12	3015CXD.P12	Oil Cylinder
13	3015CXD.P13	Bottom Cylinder Nylon Ring
14	3015CXD.P14	Copper Packing
15	3015CXD.P15	Nylon Ring
16	3015CXD.P16	Strainer
17	SB-4.0	Steel ball 4.0mm
18	SB-5.0	Steel Ball 5.0mm
19	3015CXD.P19	Ball Valve Seat
20	3015CXD.P20	Safety Valve Spring
21	3015CXD.P21	Pressure Adjusting Screw
22	GSA08.09-4	O-Ring
23	3015CXD.P23	Safety valve screw
24	3015CXD.P24	Safety Valve Spring (Low)

Item	Part No.	Description
25	3015CXD.P25	Hex Bolt M6x12
26	3015CXD.P26	Base Plate
27	3015CXD.P27	Copper Packing
28	3015CXD.P28	Pump Cylinder (Large)
29	3015CXD.P29	Tension Spring (Large)
30	SA29.V3-41	O-Ring
31	3015CXD.P31	Split Washer
32	3015CXD.P32	Pump Core (Large)
33	3015CXD.P33	Pump Inner (Large)
34	3015CXD.P34	Spring Cover Plate (22mm)
35	3015CXD.P35	Retaining Ring (22mm)
36	3015CXD.P36	Copper Packing
37	3015CXD.P37	Pump Cylinder (Small)
38	3015CXD.P38	Pump Spring (Small)
39	SA695.13	O-Ring
40	3015CXD.P40	Split Ring
41	3015CXD.P41	Pump core (Small)
42	3015CXD.P42	Pump Liner (Small)
43	3015CXD.P43	Spring Cover Plate 15mm
44	3015CXD.P44	Retaining Ring 15mm
45	SB-6.0	Steel Ball 6.0mm
46	3015CXD.P46	Discharge Valve Ass'y
--	3015CXD.P41A	Pump Core Ass'y (inc 39,41,43) (Not Shown)

**NOTE:** It is our policy to continually improve products and as such we reserve the right to alter data, specifications and component parts without prior notice. There may be alternative versions of this product, please contact us should you require this information.

**IMPORTANT:** No liability is accepted for incorrect use of product. Spare parts must be fitted by a competent person

**WARRANTY:** Guarantee is 12 months from purchase date, proof of which will be required for any claim.