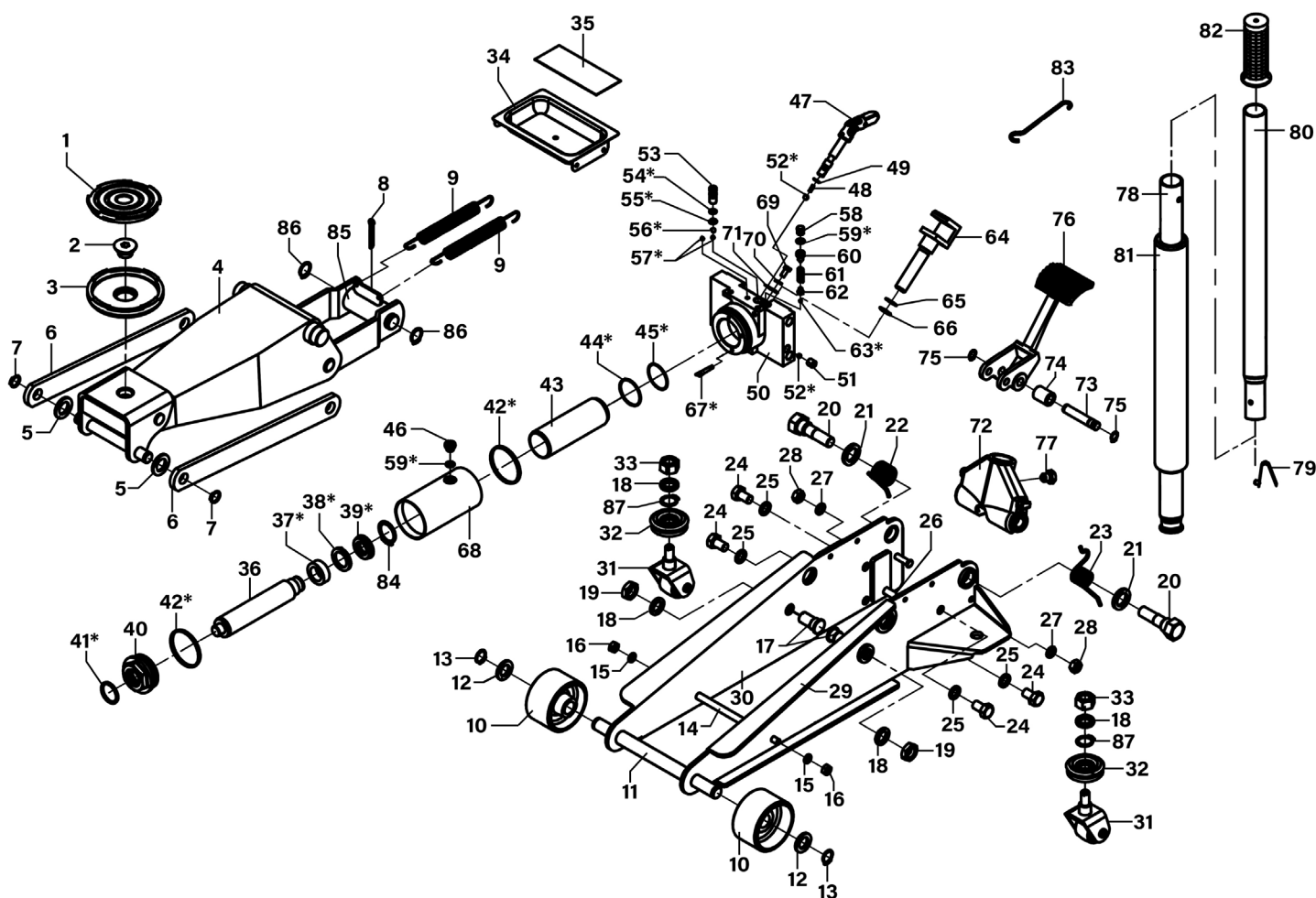


Parts Information: Trolley Jack 3 Tonne with Foot Pedal Model No: 3001CXP.V2



Item	Part No.	Description	Qty
1	JP30	Safety Rubber Jack Pad - Type B	1
2	4040A.02	Saddle Pin	1
3	3001CXP.03	Saddle, White Serrated, (F) Stepped Ø 110mm	1
4	3001CXP.04	Lift Arm Assembly	1
5	FWM16.S	Flat Washer M16 Zinc	2
6	3001CXP.06	Radius Link	2
7	1020LE.V3-42	External Circlip 16.0mm ID.	2
8	3001CXP.08	Cotter Pin	1
9	3001CXP.09	Return Spring	2
10	3001CXP.10	Wheel, Front, Fixed (D: 80 W: 50 B: 18)	2
11	3001CXP.11	Front Axle	1
12	FWM18.S	Flat Washer M18 Zinc	2
13	3001CXP.13	External Circlip 18.0mm ID.	2
14	3001CXP.14	Frame Tie Rod	1
15	SWM8.S	Spring Washer M8 Zinc	2
16	NLN8.S	Nyloc Nut M8 Zinc	2

Item	Part No.	Description	Qty
17	3001CXP.17	Radius Link Stud	2
18	SWM16.S	Spring Washer M16 Zinc	4
19	NLN16.S	Nyloc Nut M16 Zinc	2
20	3001CXP.20	Handle Sleeve Bolt	2
21	SWM20.SB	Spring Washer M20 Black	2
22	3001CXP.22	Torsion Spring (Left)	1
23	3001CXP.23	Torsion Spring Dia 25.1mm (Right)	1
24	3000CXD.V6-26	Bolt (M12x1.25x20)	4
25	SWM12.S	Spring Washer M12 Zinc	4
26	3001CXP.26	Frame Tie Rod	1
27	SWM10.S	Spring Washer M10 Zinc	2
28	NLN10.S	Nyloc Nut M10 Zinc	2
29	3001CXP.29	Frame, Left Side	1
30	3001CXP.30	Frame, Right Side	1
31	3001CXP-V2-31	Castor Wheel Assembly	2
32	3001CXP-V2-32	Bearing Race Assembly	2

NOTE: It is our policy to continually improve products and as such we reserve the right to alter data, specifications and component parts without prior notice. There may be alternative versions of this product, please contact us should you require this information.

IMPORTANT: No liability is accepted for incorrect use of product. Spare parts must be fitted by a competent person

WARRANTY: Guarantee is 12 months from purchase date, proof of which will be required for any claim.



Parts Information: Trolley Jack 3 Tonne with Foot Pedal Model No: 3001CXP.V2

Item	Part No.	Description	Qty
33	SN16.S	Steel Nut M16 Zinc	2
34	3001CXP.34	Tool Tray	1
35	3001CXP.35	Rubber Pad (Magnetic)	1
36	3001CXP.36	Ram Plunger	1
37	3001CXP.37	Bushing Cover	1
38	3001CXP.38	Back-up Washer	1
39	3001CXP.39	U-Cup Seal	1
40	3001CXP.40	Top Nut	1
41	3001CXP.41	O-Ring (Ø29.4 × Ø3.55)	1
42	3001CXP.42	Wedge Ring	2
43	3001CXP.43	Cylinder	1
44	3001CXP.44	Back-up Washer	1
45	3001CXP.45	O-Ring (Ø39.5 × Ø2.4)	1
46	3001CXP.49	Oil Filler Plug Screw	1
47	4040TB.70	Release Valve Assembly	1
48	SQ0344	Release Valve Spring	1
49	3001CXP.51	O-Ring (Ø8 × 1.8)	1
50	3001CXP-V2-50	Base	1
51	3001CXP.53	Screw (M10x1x10)	1
52	SB-6.1	Steel Ball 6.1mm	2
53	3001CXP.55	Bolt (M10x1)	1
54	4040A.57	Back-up Washer	1
55	3001CXP.57	O-Ring (7.7x1.9)	1
56	SB-7.0	Steel Ball 7.0mm	1
57	SB-5.0	Steel Ball 5.0mm	2
58	4040A.50	Guide Screw	1
59	2500LE.V3-54	O-Ring, (Ex: 12.80 In: 8.08 Cs: 2.36)	2
60	4040A.52	Safety Valve Screw	1
61	2500LE.V3-56	Safety Valve Spring Dia 10.2mm	1
62	4040A.54	Valve	1

Item	Part No.	Description	Qty
63	SB-4.0	Steel Ball 4.0mm	1
64	3001CXP.66	Pump Piston	1
65	3001CXP.67	Back-up Washer	1
66	3001CXP.68	O-Ring (Ex: 19.40 In: 14.60 Cs: 2.40)	1
67	4040A.79	Strainer	1
68	3001CXP.70	Reservoir	1
69	SS612.S	Hex Head Set Screw M6 X 12 Zinc	1
70	SWM6.S	Spring Washer M6 Zinc	1
71	2500LE.V3-84	Flat Washer (26 × 17 × t3)	1
72	3001CXP.74	Handle Socket	1
73	3001CXP.75	Handle Socket Pin	1
74	3001CXP.76	Handle Socket Roller	1
75	2500LE.V3-93	External Circlip 12.0mm ID.	2
76	3001CXP.78	Foot Pedal	1
77	4040A.87N	Handle Socket Bolt	1
78	3001CXP.80	Lower Handle	1
79	2001LERE.V2-92	Handle Lock Button	1
80	3001CXP.82	Upper Handle	1
81	4040A.92	Handle Protection Foam	1
82	3001CXP.84	Handle Grip	1
83	3001CXP.85	Hook	1
84	2500LE.V3-39	External Circlip 20.5mm ID.	1
85	SQ0430	Connection Rod	1
86	2500LE.V3-39	External Circlip 20.5mm ID.	2
87	SQ0030	External Circlip 18.0mm ID.	2
--	3001CXP.HU	Hydraulic Unit for 3001CXP (Not Shown)	1
--	3001CXP.RK	Repair Kit for 3001CXP-Contains Parts Marked (*) (Not Shown)	1

NOTE: It is our policy to continually improve products and as such we reserve the right to alter data, specifications and component parts without prior notice. There may be alternative versions of this product, please contact us should you require this information.

IMPORTANT: No liability is accepted for incorrect use of product. Spare parts must be fitted by a competent person

WARRANTY: Guarantee is 12 months from purchase date, proof of which will be required for any claim.

Sealey Group, Kempson Way, Suffolk Business Park, Bury St Edmunds, Suffolk. IP32 7AR



01284 757500



sales@sealey.co.uk



www.sealey.co.uk