

**NOTE:** It is our policy to continually improve products and as such we reserve the right to alter data, specifications and component parts without prior notice. There may be alternative versions of this product, please contact us should you require this information.

**IMPORTANT:** No liability is accepted for incorrect use of product. Spare parts must be fitted by a competent person

**WARRANTY:** Guarantee is 12 months from purchase date, proof of which will be required for any claim.



Parts Information:  
**Trolley Jack 2.5tonne Low Entry**  
**Model No: 2500LE**

Item	Part No.	Description
1	2500LE.01	Lifting Arm Ass'y
2	2500LE.02	Handle Assembly
3	2500LE.03	Handle Socket
4	2500LE.04	Handle Socket Screw
5	2500LE.05	Handle Socket Pin
6	2500LE.06	Frame Assembly
7	SWM12.SB	Spring Washer M12 Black
8	SN12.S	Steel Nut M12
9	SCB1225.SB	Socket Cap Bolt M12x25 Black
10	3290CX.10	Wheel, Swivel Castor
11	2500LE.11	Supporting Shaft
12	2500LE.12	Hydraulic Unit Assembly (See Separate Diagram)
13	2500LE.13	Torsion Spring
14	2500LE.14	Bolt, M18x30
15	SWM16.SB	Spring Washer M16 Black

Item	Part No.	Description
16	2500LE.16	Thin Seal
17	2500LE.17	Bolt, M18x58
18	2500LE.18	Supporting Shaft
19	2500LE.19	External Circlip
20	2050CX.V2-21	Linking Bolt
21	2500LE.21	Seal
22	SWM16.SB	Spring Washer M16 Black
23	3290CX.21	Half nut M16
24	2500LE.24	Saddle Assembly
25	2200HL.V2-13	External Circlip
26	2500LE.26	Wheel, Fixed
27	GNM19S	Grease Nipple Str 6 x 1.00mm
28	2500LE.28	External Circlip
--	2500LE.RK	Repair Kit (Not Shown)
--	2500LE/JP	Rubber Safety Jack Pad (Not Shown)

**NOTE:** It is our policy to continually improve products and as such we reserve the right to alter data, specifications and component parts without prior notice. There may be alternative versions of this product, please contact us should you require this information.

**IMPORTANT:** No liability is accepted for incorrect use of product. Spare parts must be fitted by a competent person

**WARRANTY:** Guarantee is 12 months from purchase date, proof of which will be required for any claim.

**Sealey Group**, Kempson Way, Suffolk Business Park, Bury St Edmunds, Suffolk. IP32 7AR



01284 757500



01284 703534

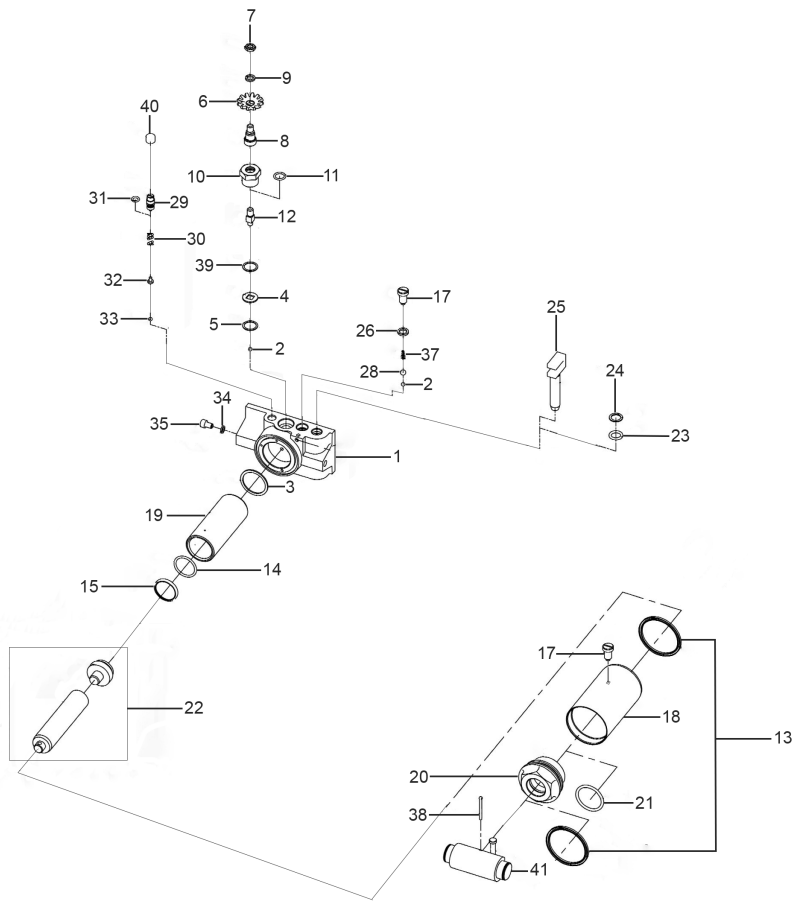


sales@sealey.co.uk



www.sealey.co.uk

### HYDRAULIC UNIT ASSEMBLY



**NOTE:** It is our policy to continually improve products and as such we reserve the right to alter data, specifications and component parts without prior notice. There may be alternative versions of this product, please contact us should you require this information.

**IMPORTANT:** No liability is accepted for incorrect use of product. Spare parts must be fitted by a competent person

**WARRANTY:** Guarantee is 12 months from purchase date, proof of which will be required for any claim.



Parts Information:  
**Trolley Jack 2.5tonne Low Entry**  
**Model No: 2500LE**

Item	Part No.	Description
1	2500LE.01	Base Plate
2	RJA1500.01-02	Steel Ball 15/64"
3	2500LE.P03	Retaining Ring
4	2500LE.P04	Draw Washer Sq Hole
5	2500LE.P05	Aluminium Washer
6	2500LE.P06	Gear
7	2500LE.P07	Half Nut M10
8	2500LE.P08	Release Valve Linking Shaft
9	SWM18.SB	Spring Washer M18 Black
10	2500LE.P10	Release Valve Nut Ass'y
11	10QJV3.2-29	O-ring
12	2500LE.P12	Release Valve Core
13	SA682.V2-41	O-Ring
14	2500LE.P14	Plastic Ring
15	2500LE.P15	Plastic Bowl Washer Blue
17	3003CXQ-05	Oil Plug
18	2500LE.P18	Reservoir
19	2500LE.P19	Cylinder
20	2500LE.P20	Cap
21	RE91-05.07	O-Ring

Item	Part No.	Description
22	2500LE.P22	Piston Rod (Includes Part 16)
23	2500LE.P23	O-Ring
24	2500LE.P24	Retaining Ring
25	2500LE.P25	Piston
26	2500LE.P26	Oil Filling Rectangle Ring
28	SB-9.0	Steel Ball 9.0mm
29	2500LE.P29	Overload Valve Nut
30	2500LE.P30	Safety Valve Spring
31	WK025.V2-31	O-Ring
32	2500LE.P32	Spring Plunger
33	SB-2.9	Steel Ball 2.9mm
34	2500LE.P34	Retaining Ring
35	2500LE.P35	Socket Cap Screw M8x12
37	2500LE.P37	Conical Spring
38	2500LE.P38	Cotter Pin
39	2500LE.P39	Steel Washer
40	2500LE.P40	Safety Valve
41	2500LE.P41	Linking Block
--	2500LE.P42	Return Spring (Not Shown)

**NOTE:** It is our policy to continually improve products and as such we reserve the right to alter data, specifications and component parts without prior notice. There may be alternative versions of this product, please contact us should you require this information.

**IMPORTANT:** No liability is accepted for incorrect use of product. Spare parts must be fitted by a competent person

**WARRANTY:** Guarantee is 12 months from purchase date, proof of which will be required for any claim.

**Sealey Group**, Kempson Way, Suffolk Business Park, Bury St Edmunds, Suffolk. IP32 7AR



01284 757500



01284 703534



sales@sealey.co.uk



www.sealey.co.uk