

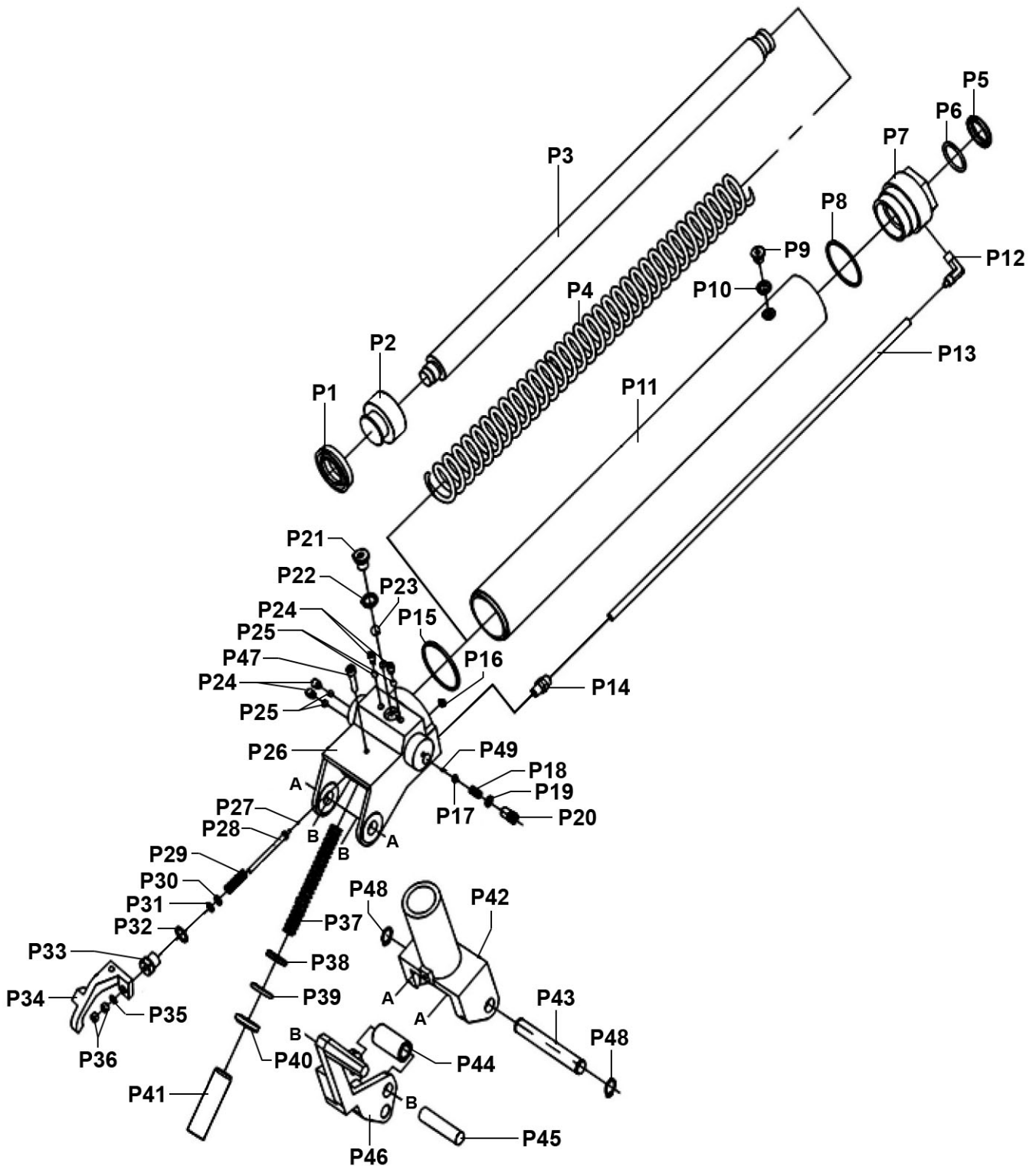
Item	Part No.	Description
1	2200HL.V2-01	Handle Grip
2	2200HL.V2-02	Jack Handle, Round Locking. 33mm
3	2200HL.V2-03	Dust Cap
4	SCB620.SB	Socket Cap Bolt M6 x 20mm Black
5	SN18.S	Steel Nut M18 Zinc
6	SWM18.S	Spring Washer M18 Zinc
7	FWM18.S	Flat Washer M18 Zinc
8	2200HL.V2-08	Wheel, Swivel Castor, Single Bolt (D:75 W:30 B:10 H:127)
9	SCB810.SB	Socket Cap Bolt M8 x 10mm Black
10	SCB612.SB	Socket Cap Bolt M6 x 12mm Black

Item	Part No.	Description
11	MC4500.P5	External Circlip 14.5mm ID
12	2200HL.V2-12	Lifting Frame Assmely
13	2200HL.V2-13	External Circlip 16.0mm ID.
14	2200HL.V2-14	Wheel, Fixed (D:74 W:43 B:13)
15	2200HL.V2-15	Base Frame Assembly
16	2200HL.V2-16	Saddle Holder
17	BHSS625.SB	Button Head Socket Screw M6 X 25 Black
18	2200HL.V2-18	Hydraulic Unit Assembly
19	2200HL.V2-19	Link Arm
20	2200HL.V2-20	Saddle Ass'y

**NOTE:** It is our policy to continually improve products and as such we reserve the right to alter data, specifications and component parts without prior notice. There may be alternative versions of this product, please contact us should you require this information.

**IMPORTANT:** No liability is accepted for incorrect use of product. Spare parts must be fitted by a competent person

**WARRANTY:** Guarantee is 12 months from purchase date, proof of which will be required for any claim.



Item	Part No.	Description
P01	2200HL.V2-P01	Rubber Seal 30*50*10
P02	2200HL.V2-P02	Piston
P03	2200HL.V2-P03	Piston Rod

Item	Part No.	Description
P04	2200HL.V2-P04	Spring
P05	2200HL.V2-P05	Dust Seal
P06	2200HL.V2-P06	O-Ring, (Ex: 35.63 In: 29.85 Cs: 2.89)

**NOTE:** It is our policy to continually improve products and as such we reserve the right to alter data, specifications and component parts without prior notice. There may be alternative versions of this product, please contact us should you require this information.

**IMPORTANT:** No liability is accepted for incorrect use of product. Spare parts must be fitted by a competent person

**WARRANTY:** Guarantee is 12 months from purchase date, proof of which will be required for any claim.



Parts Information:  
**Trolley Jack 2tonne High Lift Low Entry**  
**Model No: 2200HL.V3**

Item	Part No.	Description
P07	2200HL.V2-P07	Ram Cover
P08	2200HL.V2-P08	O-Ring, (Ex: 55.85 In: 51.14 Cs: 2.36)
P09	2200HL.V2-P09	Screw
P10	2200HL.V2-P10	Seal Washer Black M10
P11	2200HL.V2-P11	Cylinder
P12	2200HL.V2-P12	Joint
P13	2200HL.V2-P13	Pu Hose 5mm x 8mm x 600mm
P14	2200HL.V2-P14	Joint
P15	2200HL.V2-P15	Nylon Ring
P16	2200HL.V2-P16	Filter
P17	2200HL.V2-P17	Steel Ball Seat
P18	2200HL.V2-P18	Spring Dia 7.5mm
P19	GSA08.09-4	O-Ring, (Ex: 11.21 In: 7.65 Cs: 1.78)
P20	2200HL.V2-P20	Valve Seat
P21	2200HL.V2-P21	Screw
P22	2200HL.V2-P22	Seal Washer
P23	SB-9.5	Steel Ball 9.5mm
P24	2200HL.V2-P24	Screw
P25	SB-6.6	Steel Ball 6.6mm
P26	2200HL.V2-P26	Pump Body
P27	SB-2.5	Steel Ball 2.5mm
P28	2200HL.V2-P28	Unloader Valve Rod
--	2200HL.V2-P28N	Unloader Valve Rod (New Style)

Item	Part No.	Description
P29	2200HL.V2-P29	Spring Dia 9.4mm
P30	2200HL.V2-P30	Spacer
P31	BS107	O-Ring, (Ex: 10.47 In: 5.23 Cs: 2.62)
P32	2200HL.V2-P32	Copper Washer M14
P33	2200HL.V2-P33	Valve Seat
P34	2200HL.V2-P34	Unloader Plate
P35	FWM5.S	Flat Washer M5 Zinc
P36	SN5.S	Steel Nut M5 Zinc
P37	2200HL.V2-P37	Spring Dia 14.5mm
P38	2200HL.V2-P38	Cup Seal 22*30*5
P39	2200HL.V2-P39	O-ring, (Ex: 28.88 In: 21.82 Cs: 3.53)
P40	2200HL.V2-P40	Dust Ring Seal
P41	2200HL.V2-P41	Pump Piston
P42	2200HL.V2-P42	Handle Socket
P43	2200HL.V2-P43	Pin, Handle Socket
P44	2200HL.V2-P44	Spacer, Handle Socket
P45	2200HL.V2-P45	Pin, Pedal
P46	2200HL.V2-P46	Pedal
P47	SCB620.SB	Socket Cap Bolt M6 x 20mm Black
P48	GSA07.4	External Circlip 13.7mm ID
P49	SB-3.0	Steel Ball 3.0mm
--	2200HL.V2-RK	Repair Kit (Not Shown)

**NOTE:** It is our policy to continually improve products and as such we reserve the right to alter data, specifications and component parts without prior notice. There may be alternative versions of this product, please contact us should you require this information.

**IMPORTANT:** No liability is accepted for incorrect use of product. Spare parts must be fitted by a competent person

**WARRANTY:** Guarantee is 12 months from purchase date, proof of which will be required for any claim.

Sealey Group, Kempson Way, Suffolk Business Park, Bury St Edmunds, Suffolk. IP32 7AR



01284 757500



sales@sealey.co.uk



www.sealey.co.uk