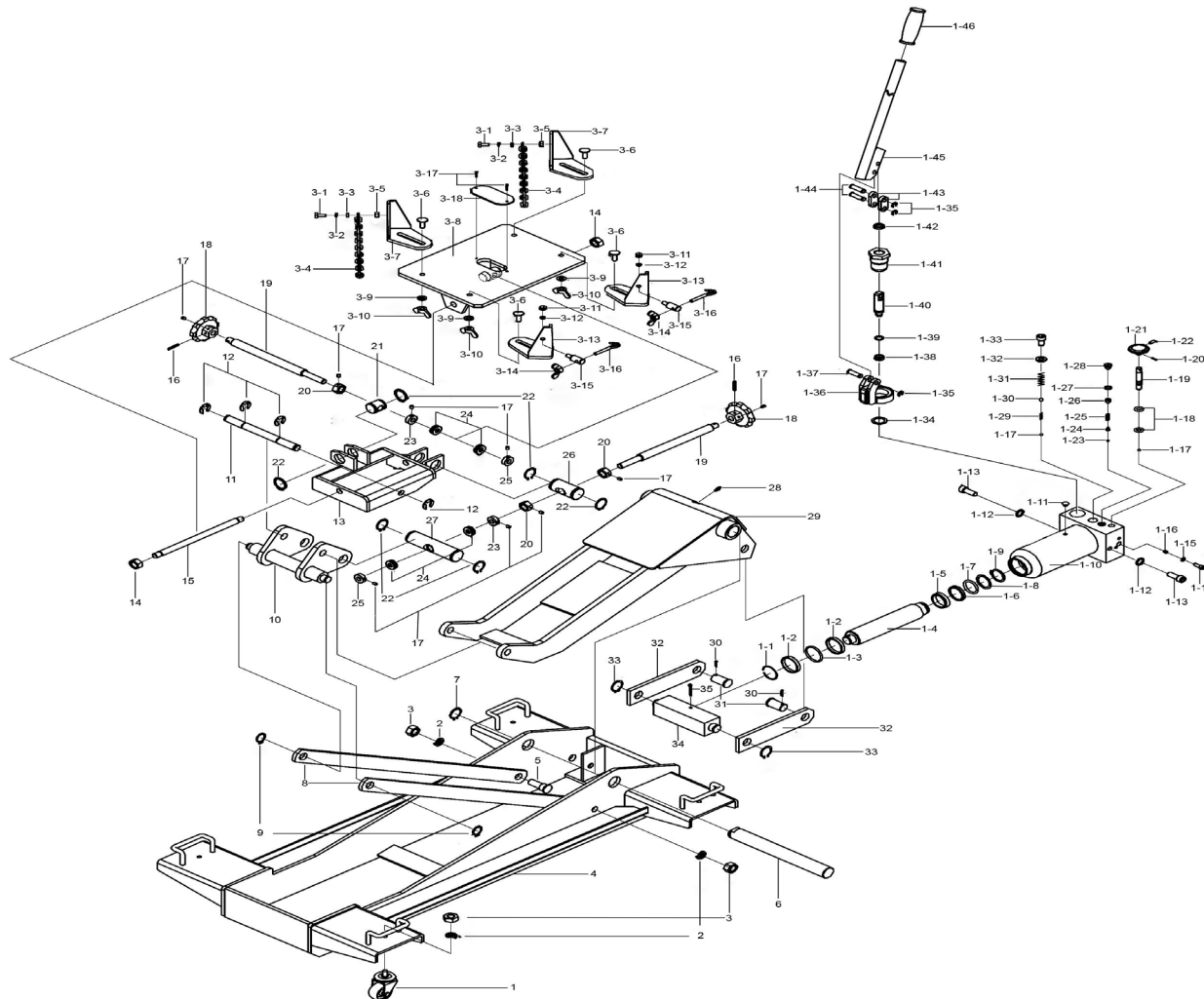




# Parts Information: Transmission Jack 1.5tonne Floor Model No: 1500E.V2



**NOTE:** It is our policy to continually improve products and as such we reserve the right to alter data, specifications and component parts without prior notice.

There may be alternative versions of this product, please contact us should you require this information.

**IMPORTANT:** No liability is accepted for incorrect use of product. Spare parts must be fitted by a competent person

**WARRANTY:** Guarantee is 12 months from purchase date, proof of which will be required for any claim.

Sealey Group, Kempson Way, Suffolk Business Park, Bury St Edmunds, Suffolk. IP32 7AR



01284 757500



01284 703534



sales@sealey.co.uk



www.sealey.co.uk



Parts Information:  
**Transmission Jack 1.5tonne Floor**  
**Model No: 1500E.V2**

Item	Part No.	Description
1	1500EV2-01	Wheel, Swivel Castor
2	SWM16.SB	Spring Washer M16 Black
3	SN16.S	Steel Nut M16 Zinc
4	1500EV2-04	Frame
5	1500EV2-05	Shaft
6	1500EV2-06	Shaft
7	1500EV2-07	Snap Ring
8	1500EV2-08	Connecting Bar
9	1500EV2-09	Snap Ring
10	1500EV2-10	Bracket
11	1500EV2-11	Shaft
12	1500EV2-12	Snap Ring
13	1500EV2-13	Bracket
14	1500EV2-14	Nut
15	1500EV2-15	Bolt
16	1500EV2-16	Pin
17	1500EV2-17	Screw
18	1500EV2-18	Knob
19	1500EV2-19	Lead screw
20	1500EV2-20	Nut
21	1500EV2-21	Shaft
22	AK4567D.18	External Circlip 32.2mm ID.
23	1500EV2-23	Circular Nut
24	B/51102	Bearing race 51102
25	1500EV2-25	Bushing
26	1500EV2-26	Shaft
27	1500EV2-27	Shaft
28	GNM19S	Grease nipple str 6 x 1.00mm single
29	1500EV2-29	Arm
30	1500EV2-30	Pin
31	1500EV2-31	Shaft
32	1500EV2-32	Rod Link
33	1500EV2-33	Snap Ring
34	1500EV2-34	Connecting Block
35	1500EV2-35	Pin
1.1	1500EV2.1-1	Snap Ring
1.2	1500EV2.1-2	Bushing
1.3	1500EV2.1-3	O-Ring
1.4	1500EV2.1-4	Piston Rod
1.5	1500EV2.1-5	Piston Ring
1.6	1500EV2.1-6	Sealing Washer
1.7	1500EV2.1-7	O-Ring
1.8	1500EV2.1-8	O-Ring

Item	Part No.	Description
1.9	1500EV2.1-9	Snap Ring
1.10	1500EV2.1-10	Hydraulic Unit
1.11	1500EV2.1-11	Oil Filler Plug
1.12	1500EV2.1-12	Bushing
1.13	1500EV2.1-13	Bolt
1.14	1500EV2.1-14	Screw
1.15	1500EV2.1-15	Steel Ball
1.16	1500EV2.1-16	O-Ring
1.17	SB-6.4	Steel ball 6.4mm
1.18	SA316.10	O-Ring
1.19	1500EV2.1-19	Oil Release Valve Rod
1.20	HPT1000.108	Spring Pin M4 X 20 Zinc
1.21	1500EV2.1-21	Knob
1.22	GSM66.S	Grub Screw M6x6
1.23	1500EV2.1-23	Steel Ball
1.24	1500EV2.1-24	Ball Seat
1.25	1500EV2.1-25	Spring
1.26	1500EV2.1-26	Screw
1.27	1500EV2.1-27	Sealing Washer
1.28	1500EV2.1-28	Bolt
1.29	1500EV2.1-29	Spring
1.30	1500EV2.1-30	Steel Ball
1.31	1500EV2.1-31	Spring
1.32	1500EV2.1-32	Copper Washer
1.33	1500EV2.1-33	Bolt
1.34	1500EV2.1-34	Copper Washer M18
1.35	1500EV2.1-35	E-Clip 7.8mm.
1.36	1500EV2.1-36	Pump Seat
1.37	1500EV2.1-37	Pin
1.38	1500EV2.1-38	Y-Seal
1.39	1500EV2.1-39	O-Ring
1.40	1500EV2.1-40	Pump Plunger
1.41	1500EV2.1-41	Pump Cylinder
1.42	1500EV2.1-42	Dustproof Seal
1.43	1500EV2.1-43	Rod Joint
1.44	1500EV2.1-44	Pin
1.45	1500EV2.1-45	Handle
1.46	1500EV2.1-46	Handle Grip
3.1	SCB825.SB	Socket Cap Bolt M8 x 25 Black
3.2	SWM6.SB	Spring Washer M6 Black
3.3	FWM6.S	Flat Washer M6 Zinc
3.4	1500EV2.3-4	Chain
3.5	1500EV2.3-5	5/16 Unc Half Nut

**NOTE:** It is our policy to continually improve products and as such we reserve the right to alter data, specifications and component parts without prior notice. There may be alternative versions of this product, please contact us should you require this information.

**IMPORTANT:** No liability is accepted for incorrect use of product. Spare parts must be fitted by a competent person

**WARRANTY:** Guarantee is 12 months from purchase date, proof of which will be required for any claim.

**Sealey Group**, Kempson Way, Suffolk Business Park, Bury St Edmunds, Suffolk. IP32 7AR



01284 757500



01284 703534



sales@sealey.co.uk



www.sealey.co.uk



Parts Information:  
**Transmission Jack 1.5tonne Floor**  
**Model No: 1500E.V2**

Item	Part No.	Description
3.6	1500EV2.3-6	Screw
3.7	1500EV2.3-7	Saddle Angle
3.8	1500EV2.3-8	Saddle Base
3.9	1500EV2.3-9	Washer
3.10	SN12.SW	Wing Nut M12 Zinc
3.11	SN10.S	Steel Nut M10 Zinc
3.12	FWM10.S	Flat Washer M10 Zinc
3.13	1500EV2.3-13	Saddle Angle
3.14	SN8.SW	Wing Nut M8 Zinc

Item	Part No.	Description
3.15	1500EV2.3-15	Guide Screw
3.16	1500EV2.3-16	Hook Bolt
3.17	MSP612.S	Machine Screw Pan Head Phillips M6 X 12mm
3.18	1500EV2.3-18	Middle plate for saddle base

**NOTE:** It is our policy to continually improve products and as such we reserve the right to alter data, specifications and component parts without prior notice. There may be alternative versions of this product, please contact us should you require this information.

**IMPORTANT:** No liability is accepted for incorrect use of product. Spare parts must be fitted by a competent person

**WARRANTY:** Guarantee is 12 months from purchase date, proof of which will be required for any claim.

**Sealey Group**, Kempson Way, Suffolk Business Park, Bury St Edmunds, Suffolk. IP32 7AR



01284 757500



01284 703534



sales@sealey.co.uk



www.sealey.co.uk