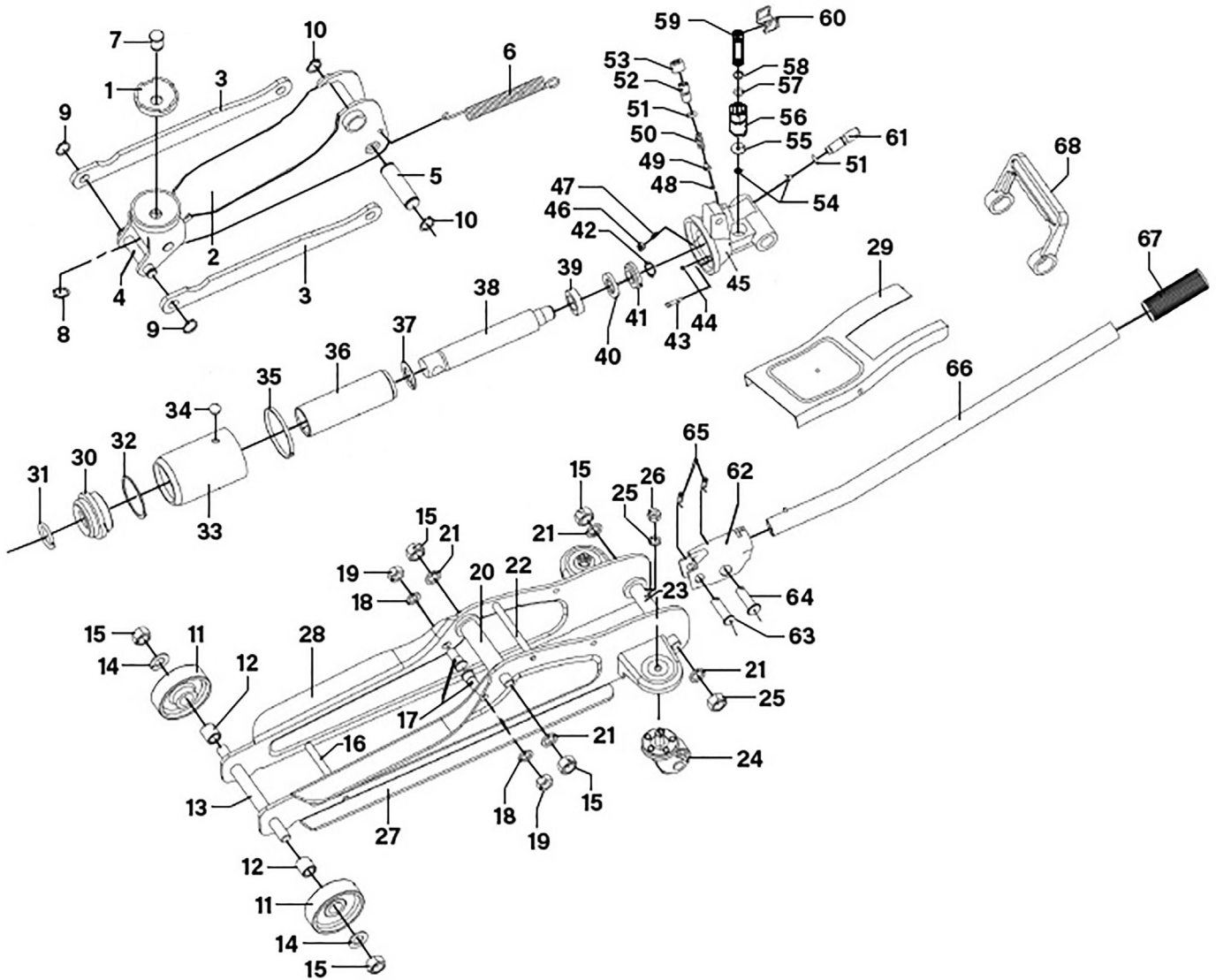




Parts Information:  
**Trolley Jack 2 Tonne Low Profile Short Chassis**  
**Model No: 1020LE SERIES**



Item	Part No.	Description	Qty
1	1020LE.V3-01	Saddle, White Serrated Cup (F) Ø 50mm	1
2	1020LE.V3-02	Lift Arm Assembly	1
3	1020LE.V3-03	Radius Link	2
4	1020LE.V3-04	Radius Link Axle	1
5	1020LE.V3-05	Ram Plunger Axle	1
6	1020LE.V3-06	Return Spring	1
7	1020LE.V3-07	Saddle Pin	1
8	1020LE.V3-08	External Circlip 11.8mm ID.	1
9	1020LE.V3-09	External Circlip 12.0mm ID.	2
10	1020LE.V3-10	External Circlip 17.0mm ID.	2
11	1020LE.V3-11	Front Wheel	2
12	1020LE.V3-12	Front Wheel Bush	2

Item	Part No.	Description	Qty
13	1020LE.V3-13	Front Axle	1
14	FWM12.S	Flat Washer M12 Zinc	2
15	SN12.S	Steel Nut M12 Zinc	6
16	1020LE.V3-16	Frame Tie Rod	1
17	1020LE.V3-17	Radius Link Stud	2
18	SWM10.S	Spring Washer M10 Zinc	2
19	NLN10.S	Nyloc Nut M10 Zinc	2
20	1020LE.V3-20	Fixed Shaft (Centre)	1
21	SWM12.S	Spring Washer M12 Zinc	4
22	1020LE.V3-22	Frame Tie Rod	1
23	1020LE.V3-23	Fixed Shaft	1
24	1020LE.V3-24	Rear Castor Assembly	2

**NOTE:** It is our policy to continually improve products and as such we reserve the right to alter data, specifications and component parts without prior notice. There may be alternative versions of this product, please contact us should you require this information.

**IMPORTANT:** No liability is accepted for incorrect use of product. Spare parts must be fitted by a competent person

**WARRANTY:** Guarantee is 12 months from purchase date, proof of which will be required for any claim.

Sealey Group, Kempson Way, Suffolk Business Park, Bury St Edmunds, Suffolk. IP32 7AR



01284 757500



sales@sealey.co.uk



www.sealey.co.uk



Parts Information:  
**Trolley Jack 2 Tonne Low Profile Short Chassis**  
**Model No: 1020LE SERIES**

Item	Part No.	Description	Qty
25	SWM8.S	Spring Washer M8 Zinc	2
26	NLN8.S	Nyloc Nut M8 Zinc	2
27	1020LE.V3-27	Frame, Left Side (Red) <b>(1020LE.V3 ONLY)</b>	1
27	1020LEB.27	Frame, Left Side (Blue) <b>(1020LEB ONLY)</b>	1
27	1020LEHV.27	Frame, Left Side (Hi-Vis) <b>(1020LEHV ONLY)</b>	1
27	1020LEO.27	Frame, Left Side (Orange) <b>(1020LEO ONLY)</b>	1
27	1020LEP.27	Frame, Left Side (Purple) <b>(1020LEP ONLY)</b>	1
28	1020LE.V3-28	Frame, Right Side (Red) <b>(1020LE.V3 ONLY)</b>	1
28	1020LEB.28	Frame, Right Side (Blue) <b>(1020LEB ONLY)</b>	1
28	1020LEHV.28	Frame, Right Side (Hi-Vis) <b>(1020LEHV ONLY)</b>	1
28	1020LEO.28	Frame, Right Side (Orange) <b>(1020LEO ONLY)</b>	1
28	1020LEP.28	Frame, Right Side (Purple) <b>(1020LEP ONLY)</b>	1
29	1020LE.V3-29	Cover Plate	1
30	1020LE.V3-30	Top Nut	1
31	1020LE.V3-31	O-Ring (Ø25 × Ø3.55)	1
32	1020LE.V3-32	Seal Ring	1
33	1020LE.V3-33	Reservoir	1
34	1020LE.V3-34	Oil Seal	1
35	1020LE.V3-35	Wedge Ring	1
36	1020LE.V3-36	Cylinder	1
37	1020LE.V3-37	Flat Washer (Ø34 x Ø23 x 0.8)	1
38	1020LE.V3-38	Ram Plunger	1
39	1020LE.V3-39	Bushing Cover	1
40	1020LE.V3-40	Back-up Washer	1
41	1020LE.V3-41	U-Cup Seal	1

Item	Part No.	Description	Qty
42	1020LE.V3-42	External Circlip 16.0mm ID	1
43	1020LE.V3-43	Filter	1
44	SB-5.0	Steel Ball 5.0mm	1
45	1020LE.V3-45	Base	1
46	1020LE.V3-46	Throttle Valve	1
47	1020LE.V3-47	Spring	1
48	SB-4.0	Steel Ball 4.0mm	1
49	1020LE.V3-49	Steel Ball Base	1
50	1020LE.V3-50	Safety Valve Spring	1
51	1020LE.V3-51	O-Ring (Ø6 × Ø3)	2
52	1020LE.V3-52	Safety Valve Screw	1
53	1020LE.V3-53	Protection Cap	1
54	SB-6.0	Steel Ball 6.0mm	2
55	1020LE.V3-55	Flat Washer (Ø16 x 4 x 4 x 1)	1
56	1020LE.V3-56	Pump	1
57	1020LE.V3-57	O-Ring (Ø7.7 × Ø1.9)	1
58	1020LE.V3-58	Back-up Washer	1
59	1020LE.V3-59	Pump Piston	1
60	1020LE.V3-60	Connection Sleeve	1
61	1020LE.V3-61	Release Valve Rod	1
62	1020LE.V3-62	Handle Socket	1
63	1020LE.V3-63	Handle Socket Pin (Upper)	1
64	1020LE.V3-64	Handle Socket Pin (Lower)	1
65	1020LE.V3-65	Retaining Pin	2
66	1020LE.V3-66	Handle	1
67	1020LE.V3-67	Handle Grip	1
68	1020LE.V3-68	Carry Handle	1
--	1020LE.V3-HU	Hydraulic Unit for 1020LE Series (Not Shown)	1
--	1020LE.V3-RK	Repair Kit for 1020LE Series (Not Shown)	1
--	JP29	Safety Rubber Jack Pad - Type A (Not Shown)	1

**NOTE:** It is our policy to continually improve products and as such we reserve the right to alter data, specifications and component parts without prior notice. There may be alternative versions of this product, please contact us should you require this information.

**IMPORTANT:** No liability is accepted for incorrect use of product. Spare parts must be fitted by a competent person

**WARRANTY:** Guarantee is 12 months from purchase date, proof of which will be required for any claim.

Sealey Group, Kempson Way, Suffolk Business Park, Bury St Edmunds, Suffolk. IP32 7AR



01284 757500



sales@sealey.co.uk



www.sealey.co.uk