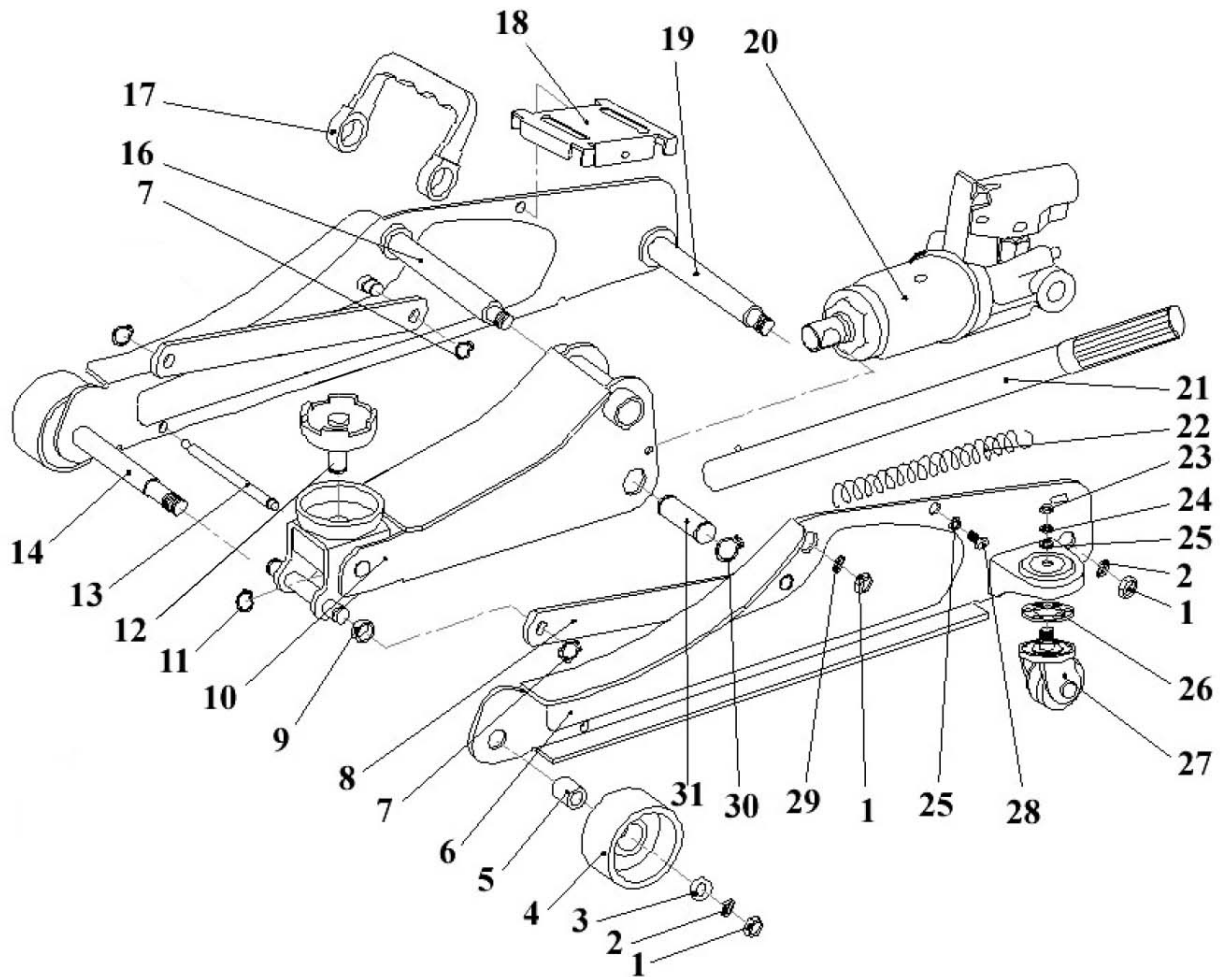


Parts Information:
**Trolley Jack 2tonne Low Entry Short
 Chassis - Red**
Model No: 1020LE



Item	Part No.	Description
1	SN12.S	Steel Nut M12 Zinc
2	SWM12.S	Spring Washer M12 Zinc
3	FWM12.S	Flat Washer M12 Zinc
4	1020LE.04	Wheel,front fixed (D:64 W:31 B:18)
5	1020LE.05	Bushing
6	1020LE.06	Frame
7	OP750.05	Ext Circlip 10.8 mm ID
8	1020LE.08	Radius link
9	1020LE.09	Plastic Ring
10	1020LE.10	Lifting arm
11	1020LE.11	Ext Circlip 11.7mm ID.
12	1020LE.12	Saddle (c/w pin)
13	1020LE.13	Side member spindle 112mm
14	1020LE.14	Front wheel axle
16	1020LE.16	Lifting arm spindle

Item	Part No.	Description
17	1020LE.17	Carry handle
18	1020LE.18	Cover plate
19	1020LE.19	Spindle
20	1020LE.20	Hydraulic unit
21	1020LE.21	Handle
22	1020LE.22	Spring Dia 18mm
23	SN8.S	Steel Nut M8 Zinc
24	SWM8.S	Spring Washer M8 Zinc
25	FWM8.S	Flat Washer M8 Zinc
26	1020LE.26	Plastic bearing race
27	1050CX.V3-24	Wheel,swivel castor, single bolt
28	SS814.S	Hex Head Set Screw M8 X 14 Zinc
29	SWM12.S	Spring Washer M12 Zinc
30	3290CX.28	Ext Circlip 21.2mm ODI
31	1020LE.31	Link pin

NOTE: It is our policy to continually improve products and as such we reserve the right to alter data, specifications and component parts without prior notice. There may be alternative versions of this product, please contact us should you require this information.

IMPORTANT: No liability is accepted for incorrect use of product. Spare parts must be fitted by a competent person

WARRANTY: Guarantee is 12 months from purchase date, proof of which will be required for any claim.