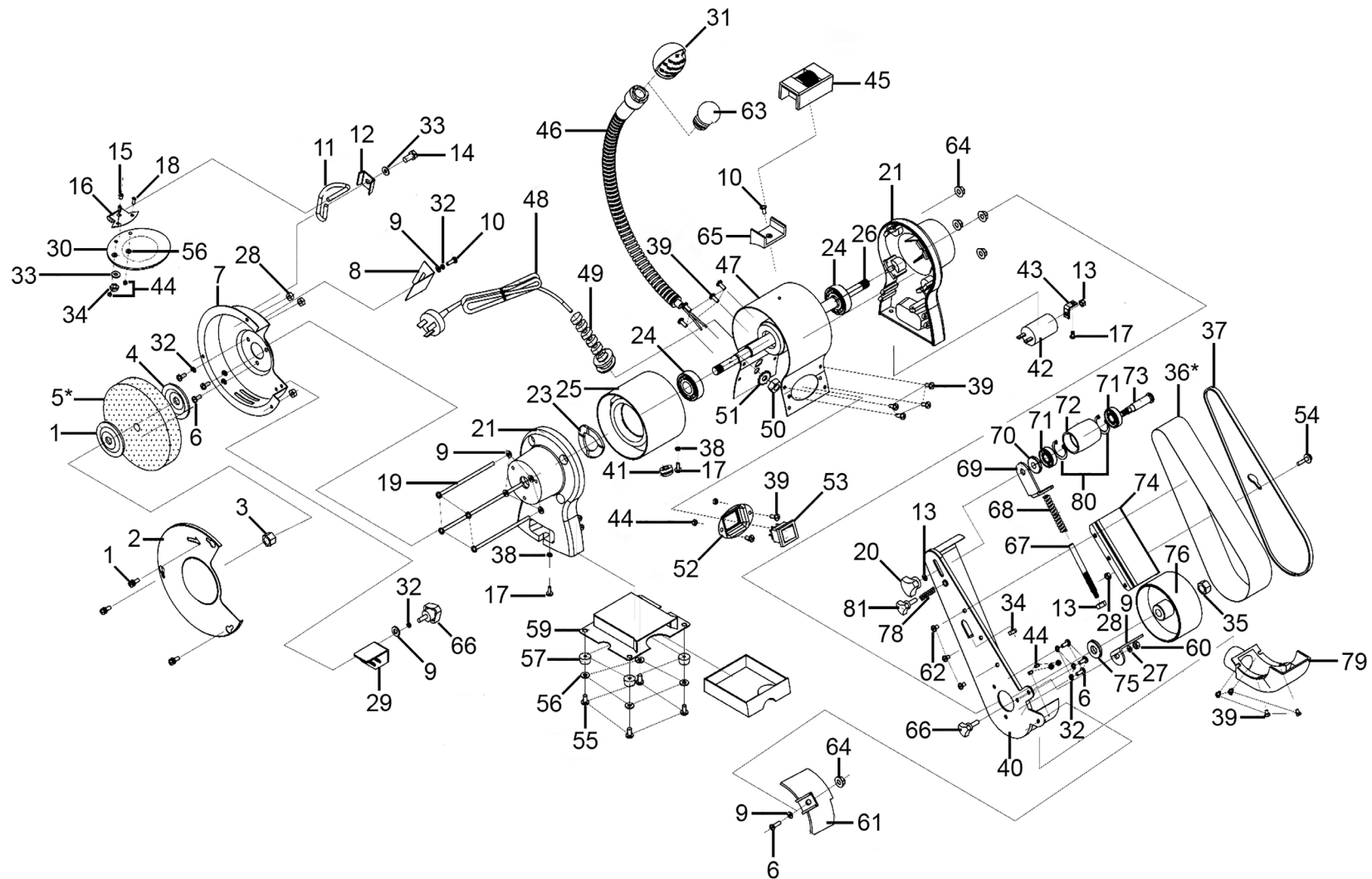




Parts Information:  
**Bench Grinder Ø150mm with 50mm Belt Sander & Worklight 250W/230V**  
**Model No: BG150BS**



**NOTE:** It is our policy to continually improve products and as such we reserve the right to alter data, specifications and component parts without prior notice.

There may be alternative versions of this product, please contact us should you require this information.

**IMPORTANT:** No liability is accepted for incorrect use of product. Spare parts must be fitted by a competent person

**WARRANTY:** Guarantee is 12 months from purchase date, proof of which will be required for any claim.

Sealey Group, Kempson Way, Suffolk Business Park, Bury St Edmunds, Suffolk. IP32 7AR



01284 757500



sales@sealey.co.uk



www.sealey.co.uk



Parts Information:  
**Bench Grinder Ø150mm with 50mm Belt  
 Sander & Worklight 250W/230V  
 Model No: BG150BS**

Item	Part No.	Description
1	MSP518.S	Machine Screw Pan Head Phillips M5 x 18mm
2	BG150BS.02	Guard Cover, Left
3	BG150XD/99-06	Left Hand Thread Nut M12
4	BG150BS.04	Wheel Flange
5*	BG150/15	Grinding Stone, Fine ( <b>See Catalogue</b> )
5*	BG150/16	Grinding Stone, Coarse ( <b>See Catalogue</b> )
6	MSP510.SB	Machine Screw Pan Head Phillips M5 x 10mm
7	BG150BS.07	Left Guard Inner Cover
8	BG150BS.08	Spark Deflector, Left
9	FWM5.SB	Flat Washer M5
10	MSP58.S	Machine Screw Pan Head Phillips M5 x 8mm
11	BG150BS.11	Left Eyeshield Mount Rod
12	BG150BS.12	Eyeshield Bracket
13	SN8.S	Steel Nut M8
14	BG200WL.15	Hex Bolt M6 x 14mm
15	CBN618.SB	Coach Bolt M6 x 18mm
16	BG150BS.16	Eyeshield Plate
17	BG150BS.17	Screw (c/w Spring Washer)
18	DAS151.14	Screw M4 x 10mm
19	MSP5130.S	Machine Screw Pan Head Phillips M5 x 130mm
20	BG150BS.20	Locking Nut
21	BG150BS.21	End Cap
23	BG150BS.23	Wavey washer 35mm
24	B/6202-2RS	Bearing 6202-2RS
25	BG150BS.25	Stator
26	BG150BS.26	Rotor
27	SN5.SB	Steel Nut M5
28	NLN5.S	Nyloc Nut M5
29	BG150BS.29	Tool rest, Left
30	BG150BS.30	Eyeshield
31	BG150BS.31	Lamp with Protective Guard
32	SWM5.SB	Spring Washer 5mm
33	FWM6.SB	Flat Washer M6
34	SN6.S	Steel Nut M6
35	SN12.S	Steel Nut M12
36*	SB006	Sanding Belt 50 x 686mm 60G (Pack of 5) <b>(Please See Catalogue)</b>
36*	SB007	Sanding Belt 50 x 686mm 80G (Pack of 5) <b>(Please See Catalogue)</b>
36*	SB005	Sanding Belt 50 x 686mm 120G (Pack Of 5) <b>(Please See Catalogue)</b>
37	BG150BS.37	Guard Cover, Right
38	BG150BS.38	Locking Washer, Toothed 4mm

Item	Part No.	Description
39	MSP410.SB	Machine Screw Pan Head Phillips M4 x 10mm
40	BG150BS.40	Right Guard Inner Cover
41	BG150BS.41	Cord Bushing
42	BG150BS.42	Capacitor
43	BG150BS.43	Capacitor Support
44	SN4.S	Steel Nut M4
45	BG150BS.45	Wheel Dressing Tool
46	BG150BS.46	Lamp Assembly
47	BG150BS.47	Motor Housing
48	MC3CX0.75	Mains Cable 3-Core 0.75mm <sup>2</sup>
49	BG150BS.49	Strain Relief
50	EU1011	Nut M10 x 1.0mm
51	BG150BS.51	Locking Washer, Toothed 10mm
52	BG150BS.52	Switch Plate
53	BG150BS.53	Power Switch, Rocker (c/w Cover)
54	BG150BS.54	Screw M5 x 16mm (c/w Washer)
55	MSP416.SB	Machine Screw Pan Head Phillips M4 x 16mm
56	FWM4.SB	Flat Washer M4
57	BG150BS.57	Rubber Foot
59	BG150BS.59	Base Plate Assembly
60	BG150BS.60	Tool Rest, Right
61	BG150BS.61	Belt Cover Plate
62	BG150BS.62	Screw M5 x 10mm (c/w Spring Washer)
63	BG150BS.63	Bulb
64	NLN5.SB	Nyloc Nut M5 Black
65	BG150BS.65	Dressing Tool Base
66	BG150BS.66	Lock Knob M5 x 10mm
67	BG150BS.67	Adjusting Rod
68	BG150BS.68	Spring Ø13.2mm
69	BG150BS.69	Spark Deflector, Right
70	BG150BS.70	Spacer, Drive Shaft
71	BG150BS.71	Ball Bearing (180201)
72	BG150BS.72	Drive Roller
73	BG150BS.73	Drive Shaft
74	BG150BS.74	Work Support
75	BG150BS.75	Drive Shaft Washer M12 x 25mm
76	BG150BS.76	Drive Wheel
78	BG150BS.78	Spring Ø8.7mm
79	BG150BS.79	Dust Collector
80	BG150BS.80	Internal Circlip Ø34.3mm
81	BG150BS.81	Adjusting Knob M6 x 10mm

**NOTE:** It is our policy to continually improve products and as such we reserve the right to alter data, specifications and component parts without prior notice. There may be alternative versions of this product, please contact us should you require this information.

**IMPORTANT:** No liability is accepted for incorrect use of product. Spare parts must be fitted by a competent person

**WARRANTY:** Guarantee is 12 months from purchase date, proof of which will be required for any claim.

Sealey Group, Kempson Way, Suffolk Business Park, Bury St Edmunds, Suffolk. IP32 7AR



01284 757500



sales@sealey.co.uk



www.sealey.co.uk